

NUEVO LEÓN

---RED FEDERAL LIBRE---

1	Cadereyta de Jiménez - Allende	MEX-009
2	Ciudad Victoria - Monterrey	MEX-085
3	La Unión - El Encadenado	MEX
4	Libramiento de China	MEX-040
5	Libramiento de Dr. González	MEX-054
6	Libramiento Noroeste de Monterrey	MEX-040
7	Linares - Ent. San Roberto	MEX-058
8	Matehuala - Ent. Puerto México	MEX-057
9	Montemorelos - China	MEX-035
10	Monterrey - Castaños	MEX-053
11	Monterrey - Mier	MEX-054
12	Monterrey - Nuevo Laredo (Libre)	MEX-085
13	Monterrey - Reynosa (Libre)	MEX-040
14	Nuevo Laredo - Piedras Negras	MEX-002
15	Paras - Nueva Ciudad Guerrero	MEX-030
16	Ramal a Aeropuerto Mariano Escobedo	MEX-054
17	Saltillo - Monterrey	MEX-040

---RED FEDERAL DE CUOTA---

18	Cadereyta - Reynosa (Cuota)	MEX-040D
19	Monterrey - Nuevo Laredo (Cuota)	MEX-085D
20	Puerto México - La Carbonera (Cuota)	MEX-057D
21	Saltillo - Monterrey (Cuota)	MEX-040D

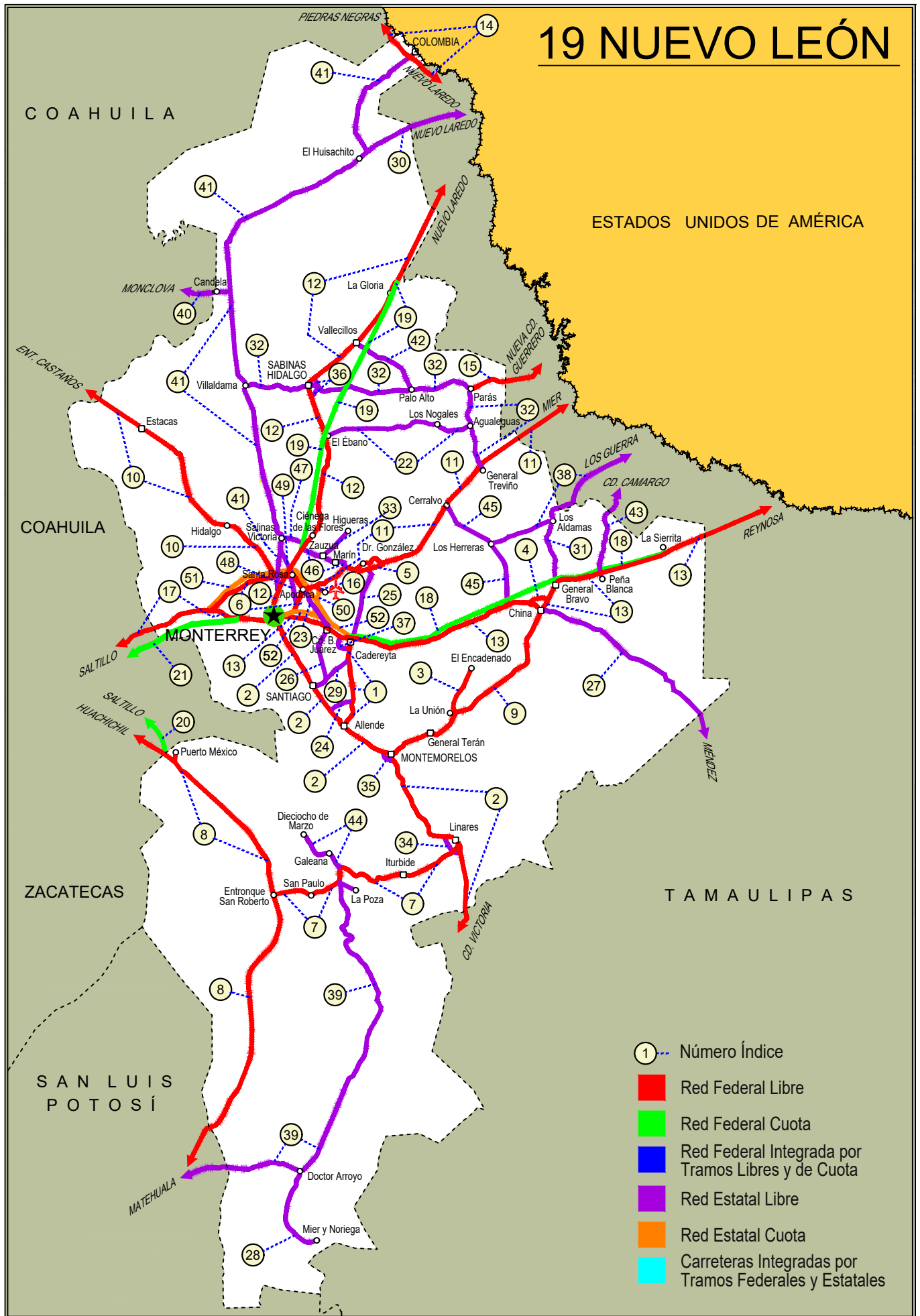
---RED ESTATAL LIBRE---

22	Agualeguas - El Ébano	NL-023
23	Apodaca - Villa Juárez	NL
24	Atongo - Lazarillos	NL
25	Cadereyta de Jiménez - Doctor González	NL
26	Cd. Benito Juárez - Villa de Santiago	NL
27	China - Méndez	NL-TAM
28	Doctor Arroyo - Mier y Noriega	NL-088
29	Ent. Hacienda del Cielo - T. Der. Cadereyta	NL
30	Ent. Huisachito - Nuevo Laredo	NL-001-TAM
31	Gral. Bravo - Los Aldamas	NL-030
32	Gral. Treviño - Villaldama	NL-003
33	Hacienda Guadalupe - Higuera	NL-006
34	Libramiento de Linares	NL
35	Libramiento de Montemorelos	NL
36	Libramiento de Sabinas Hidalgo	NL
37	Libramiento Poniente de Cadereyta	NL
38	Los Guerra - Los Herreras	TAM-NL
39	Matehuala - La Poza	SLP-029-NL-061
40	Monclova - Estación Candela	COA-030-NL
41	Monterrey - Colombia	NL-001
42	Palo Alto - Vallecillos	NL
43	Peña Blanca - Cd. Camargo	NL-TAM
44	Ramal a 18 de Marzo	NL
45	Ramal a Cerralvo	NL-013
46	Ramal a Marín	NL
47	Salinas Victoria - Ciénega de Flores	NL
48	Santa Rosa - Mezquital	NL
49	Santa Rosa - Salinas Victoria	NL

---RED ESTATAL DE CUOTA---

50	Aeropuerto de Monterrey (Cuota)	NL-D
51	Anillo Periférico de Monterrey (Cuota)	NL-D
52	Monterrey - Cadereyta (Cuota)	NL-D

19 NUEVO LEÓN



NUEVO LEÓN

1 CARR: Cadereyta de Jiménez - Allende

CLAVE: 19009

RUTA: MEX-009

AÑO: 2025

LUGAR	ESTACION				CLASIFICACION VEHICULAR EN PORCIENTO										COORDENADAS					
	KM	TE	SC	TDPA	M	A	B	C2	C3	T3S2	T3S3	T3S2R4	OTROS	A	B	C	K'	D	LATITUD	LONGITUD
Cadereyta de Jiménez	0.00	3	1	7165	5.5	79.7	1.1	2.9	1.9	3.9	1.4	2.7	0.9	85.2	1.1	13.7	0.086	0.596	25.553744	-100.006499
Cadereyta de Jiménez	0.00	3	2	7038	5.3	80.2	0.9	2.9	1.6	4.1	1.4	3.0	0.6	85.5	0.9	13.6	0.104	0.596	25.553736	-100.006448
T. der. Huajuquito	7.30	3	0	11294	4.5	76.7	1.2	4.3	2.9	5.2	1.3	3.0	0.9	81.2	1.2	17.6	0.080	0.582	25.518533	-100.007073
T. Izq. Atongo	26.80	1	0	6844	4.5	68.5	1.2	8.7	2.5	7.9	1.4	4.5	0.8	73.0	1.2	25.8	0.093	0.564	25.377753	-99.986772
Allende	37.00	1	1	6470	2.8	76.7	1.2	7.4	3.7	3.1	1.5	2.6	1.0	79.5	1.2	19.3	0.091	0.551	25.290758	-100.014758
Allende	37.00	1	2	6112	2.8	76.5	1.2	7.6	3.8	2.9	1.5	2.6	1.1	79.3	1.2	19.5	0.082	0.551	25.290629	-100.014711

2 CARR: Ciudad Victoria - Monterrey

CLAVE: 00462

RUTA: MEX-085

AÑO: 2025

LUGAR	ESTACION				CLASIFICACION VEHICULAR EN PORCIENTO										COORDENADAS					
	KM	TE	SC	TDPA	M	A	B	C2	C3	T3S2	T3S3	T3S2R4	OTROS	A	B	C	K'	D	LATITUD	LONGITUD
Cd. Victoria (Central)	0.00	3	1	7201	10.3	82.8	1.6	1.9	0.8	0.8	0.3	1.4	0.1	93.1	1.6	5.3	0.085	0.519	23.777605	-99.136727
Cd. Victoria (Lateral)	0.00	3	1	1151	9.7	81.0	1.8	4.5	1.5	0.7	0.5	0.2	0.1	90.7	1.8	7.5	0.099	0.519	23.778094	-99.136541
Cd. Victoria (Central)	0.00	3	2	8227	10.2	83.0	1.6	1.8	0.9	0.7	0.2	1.5	0.1	93.2	1.6	5.2	0.086	0.519	23.777624	-99.136835
Cd. Victoria (Lateral)	0.00	3	2	1220	10.0	80.8	1.7	4.4	1.2	0.8	0.7	0.3	0.1	90.8	1.7	7.5	0.095	0.519	23.778142	-99.136799
T. Der. Gómez	19.60	3	0	6212	3.2	81.9	3.2	8.2	0.8	1.4	0.5	0.7	0.1	85.1	3.2	11.7	0.101	0.673	23.915692	-99.112356
Luz del Campesino	25.35																			
T. Izq. Santa Engracia	27.35	3	0	11126	3.2	66.2	4.8	7.4	1.6	7.2	2.2	6.5	0.9	69.4	4.8	25.8	0.106	0.673	23.997169	-99.110431
Barretal	39.00	3	0	10244	3.8	66.9	5.8	4.9	1.5	6.9	1.9	7.4	0.9	70.7	5.8	23.5	0.111	0.660	24.093674	-99.144997
T. Izq. Hidalgo y La Mesa	77.50	1	0	10331	5.3	64.0	6.0	4.4	1.7	7.0	2.5	8.1	1.0	69.3	6.0	24.7	0.095	0.506	24.244045	-99.425196
Villagrán	106.00	1	0	8908	5.6	64.0	5.8	4.0	2.9	6.5	2.3	8.1	0.8	69.6	5.8	24.6	0.081	0.560	24.463921	-99.496380
Villagrán	106.00	3	0	6653	5.6	63.8	6.1	3.7	3.1	6.5	2.2	8.0	1.0	69.4	6.1	24.5	0.082	0.623	24.481972	-99.505555
T. Izq. Villa Mainero	118.00	3	1	5098	3.2	66.8	6.0	3.4	2.1	7.1	2.5	8.0	0.9	70.0	6.0	24.0	0.131	0.703	24.581771	-99.539042
T. Izq. Villa Mainero	118.00	3	2	4903	3.1	67.2	5.7	3.2	2.0	7.3	2.5	8.1	0.9	70.3	5.7	24.0	0.091	0.703	24.581859	-99.539068
Lim. Edos. Term. Tamps. Ppia. N. L.	126.20																			
T. Libramiento de Linares Sur	152.50																			
Linares	154.00	1	0	11776	3.0	71.4	4.9	2.8	1.5	7.1	1.9	6.6	0.8	74.4	4.9	20.7	0.090	0.675	24.837574	-99.560013
Linares	154.00	3	1	7790	3.8	74.7	3.5	5.4	1.2	4.4	1.4	4.7	0.9	78.5	3.5	18.0	0.108	0.613	24.881657	-99.587019
Linares	154.00	3	2	7806	3.7	74.6	3.8	5.5	1.2	4.3	1.4	4.7	0.8	78.3	3.8	17.9	0.087	0.613	24.881543	-99.587242
T. Libramiento de Linares Norte	157.30																			
La Laja	171.00	3	1	6568	3.0	68.1	4.9	5.3	1.4	7.6	2.3	6.2	1.2	71.1	4.9	24.0	0.082	0.507	24.923020	-99.688650
La Laja	171.00	3	2	6107	2.7	68.9	4.5	5.3	1.2	7.6	2.6	6.2	1.0	71.6	4.5	23.9	0.091	0.507	24.922994	-99.688752
T. C. Libramiento de Montemorelos Sur	197.50	3	0	4015	4.8	85.7	2.8	2.3	1.7	1.4	0.7	0.4	0.2	90.5	2.8	6.7	0.087	0.600	25.127786	-99.809244
Montemorelos	205.00	3	1	13555	3.5	76.4	3.4	5.7	1.7	5.3	1.1	2.2	0.7	79.9	3.4	16.7	0.099	0.501	25.202448	-99.906717
Montemorelos	205.00	3	2	15108	3.5	76.4	3.3	5.7	1.5	5.6	1.1	2.4	0.5	79.9	3.3	16.8	0.092	0.501	25.202103	-99.906310

NUEVO LEÓN

2 CARR: Ciudad Victoria - Monterrey

CLAVE: 00462

RUTA: MEX-085

AÑO: 2025

LUGAR	ESTACION				CLASIFICACION VEHICULAR EN PORCIENTO													COORDENADAS		
	KM	TE	SC	TDPA	M	A	B	C2	C3	T3S2	T3S3	T3S2R4	OTROS	A	B	C	K'	D	LATITUD	LONGITUD
T. C. Libramiento de Montemorelos Norte	208.50	1	1	8278	3.3	77.9	3.6	5.4	1.4	3.6	0.8	3.4	0.6	81.2	3.6	15.2	0.086	0.627	25.191318	-99.882558
T. C. Libramiento de Montemorelos Norte	208.50	1	2	8338	3.4	77.5	3.4	5.5	1.5	3.6	0.9	3.5	0.7	80.9	3.4	15.7	0.095	0.627	25.191182	-99.882690
Allende	227.45	1	1	12383	1.6	83.5	2.0	5.6	1.5	2.7	0.7	1.8	0.6	85.1	2.0	12.9	0.095	0.615	25.252368	-99.984408
Allende	227.45	1	2	13534	1.4	83.9	2.1	5.6	1.8	2.6	0.6	1.6	0.4	85.3	2.1	12.6	0.102	0.615	25.252180	-99.984221
Allende	227.45	3	1	17314	3.1	83.6	2.6	3.2	1.7	2.8	0.7	1.8	0.5	86.7	2.6	10.7	0.095	0.548	25.295881	-100.048849
Allende	227.45	3	2	17252	3.1	83.2	2.8	3.4	1.6	3.3	0.5	1.8	0.3	86.3	2.8	10.9	0.083	0.548	25.295943	-100.049029
El Cercado	249.00	1	1	24025	2.8	86.5	1.7	2.2	1.9	2.3	0.5	1.5	0.6	89.3	1.7	9.0	0.080	0.508	25.357536	-100.094921
El Cercado	249.00	1	2	23296	2.7	86.9	1.8	2.1	1.7	2.2	0.6	1.6	0.4	89.6	1.8	8.6	0.080	0.508	25.357411	-100.095067
T. Der. Las Huertas	257.00	3	1	30108	8.3	82.9	1.5	2.1	1.1	1.3	0.5	1.7	0.6	91.2	1.5	7.3	0.129	0.549	25.456687	-100.166885
T. Der. Las Huertas	257.00	3	2	29754	8.4	82.9	1.2	2.2	1.0	1.2	0.7	1.9	0.5	91.3	1.2	7.5	0.100	0.549	25.456628	-100.167000
T. Izq. el Barro	266.00	3	1	40290	5.0	87.7	0.8	1.9	1.2	1.5	0.6	1.0	0.3	92.7	0.8	6.5	0.097	0.552	25.531656	-100.214001
T. Izq. el Barro	266.00	3	2	40388	4.9	88.2	1.0	2.0	1.1	1.3	0.5	0.8	0.2	93.1	1.0	5.9	0.078	0.552	25.531546	-100.214121
La Estanzuela	274.82	3	1	55404	5.2	83.8	1.4	2.7	0.8	1.1	0.5	3.7	0.8	89.0	1.4	9.6	0.064	0.526	25.589093	-100.259035
La Estanzuela	274.82	3	2	60180	5.4	84.8	1.2	2.6	1.0	0.8	0.3	3.4	0.5	90.2	1.2	8.6	0.063	0.526	25.588995	-100.259159
Monterrey (Alta)	287.00	1	1	60099	3.1	88.4	1.5	1.6	1.1	1.3	0.4	2.3	0.3	91.5	1.5	7.0	0.058	0.511	25.602524	-100.266488
Monterrey (Baja)	287.00	1	1	18110	6.4	83.2	0.8	6.4	1.5	0.6	0.3	0.5	0.3	89.6	0.8	9.6	0.076	0.511	25.601629	-100.265757
Monterrey (Alta)	287.00	1	2	62324	3.2	89.0	1.7	1.5	1.0	1.1	0.2	2.1	0.2	92.2	1.7	6.1	0.066	0.511	25.602700	-100.266733
Monterrey (Baja)	287.00	1	2	17498	6.3	83.2	1.1	6.6	1.3	0.5	0.2	0.6	0.2	89.5	1.1	9.4	0.071	0.511	25.603047	-100.267107

3 CARR: La Unión - El Encadenado

CLAVE:

RUTA: MEX

AÑO: 2025

LUGAR	ESTACION				CLASIFICACION VEHICULAR EN PORCIENTO													COORDENADAS		
	KM	TE	SC	TDPA	M	A	B	C2	C3	T3S2	T3S3	T3S2R4	OTROS	A	B	C	K'	D	LATITUD	LONGITUD
La Unión	0.00	3	0	677	28.0	66.0	0.6	3.0	0.7	0.8	0.2	0.5	0.2	94.0	0.6	5.4	0.115	0.603	25.345146	-99.577333
El Encadenado	10.00	1	0	200	19.7	76.4	0.7	1.4	1.5	0.1	0.0	0.2	0.0	96.1	0.7	3.2	0.110	0.591	25.403911	-99.538849

4 CARR: Libramiento de China

CLAVE:

RUTA: MEX-040

AÑO: 2025

LUGAR	ESTACION				CLASIFICACION VEHICULAR EN PORCIENTO													COORDENADAS		
	KM	TE	SC	TDPA	M	A	B	C2	C3	T3S2	T3S3	T3S2R4	OTROS	A	B	C	K'	D	LATITUD	LONGITUD
T. C. Monterrey - Reynosa (Poniente)	0.00	3	0	2841	1.6	72.0	2.2	5.2	3.2	11.3	2.5	1.7	0.3	73.6	2.2	24.2	0.090	0.682	25.710890	-99.244208
T. C. Monterrey - Reynosa (Oriente)	2.41	1	0	4367	2.5	66.6	3.4	9.6	2.3	10.0	3.2	1.9	0.5	69.1	3.4	27.5	0.092	0.540	25.709756	-99.235160

NUEVO LEÓN

5 CARR: Libramiento de Dr. González

CLAVE: 00127

RUTA: MEX-054

AÑO: 2025

LUGAR	ESTACION				CLASIFICACION VEHICULAR EN PORCIENTO										COORDENADAS					
	KM	TE	SC	TDPA	M	A	B	C2	C3	T3S2	T3S3	T3S2R4	OTROS	A	B	C	K'	D	LATITUD	LONGITUD
T. C. Monterrey - Mier Oeste	44.00	3	0	3278	2.2	67.8	1.3	12.3	1.5	5.4	2.2	6.9	0.4	70.0	1.3	28.7	0.086	0.504	25.847215	-99.963730
T. C. Monterrey - Mier Este	54.50	1	0	3743	1.2	66.9	1.2	10.4	1.5	4.3	2.3	11.7	0.5	68.1	1.2	30.7	0.098	0.572	25.866562	-99.881948

6 CARR: Libramiento Noroeste de Monterrey

CLAVE: 19085

RUTA: MEX-040

AÑO: 2025

LUGAR	ESTACION				CLASIFICACION VEHICULAR EN PORCIENTO										COORDENADAS					
	KM	TE	SC	TDPA	M	A	B	C2	C3	T3S2	T3S3	T3S2R4	OTROS	A	B	C	K'	D	LATITUD	LONGITUD
T. C. Saltillo - Monterrey	0.00	3	1	13921	1.5	48.2	3.1	5.6	3.2	30.9	3.2	3.4	0.9	49.7	3.1	47.2	0.083	0.548	25.717863	-100.542768
T. C. Saltillo - Monterrey	0.00	3	2	14650	1.6	48.9	2.8	5.6	2.8	30.7	3.3	3.5	0.8	50.5	2.8	46.7	0.089	0.548	25.717916	-100.542830
T. Der. Monterrey	14.40	1	1	21052	2.9	55.1	2.7	6.7	3.4	22.7	2.6	3.5	0.4	58.0	2.7	39.3	0.121	0.713	25.775065	-100.463453
T. Der. Monterrey	14.40	1	2	21904	3.0	54.7	2.9	6.5	3.4	22.7	2.4	3.7	0.7	57.7	2.9	39.4	0.116	0.713	25.775207	-100.463321
T. Der. Monterrey	14.40	3	1	37001	2.0	67.8	2.3	5.6	3.3	14.8	1.8	2.0	0.4	69.8	2.3	27.9	0.081	0.509	25.781626	-100.444925
T. Der. Monterrey	14.40	3	2	34195	1.9	66.6	2.1	5.7	3.1	16.5	2.0	1.7	0.4	68.5	2.1	29.4	0.079	0.509	25.781705	-100.444964
X. C. Monterrey - Castaños	31.00	1	1	39642	3.5	63.9	3.3	6.9	3.5	13.3	2.2	2.7	0.7	67.4	3.3	29.3	0.086	0.570	25.822466	-100.316218
X. C. Monterrey - Castaños	31.00	1	2	38735	3.5	63.9	3.3	6.9	3.5	13.3	2.2	2.7	0.7	67.4	3.3	29.3	0.069	0.570	25.822567	-100.316133
X. C. Monterrey - Nuevo Laredo (Libre)	35.35	3	1	38867	7.4	75.7	2.7	4.0	3.3	3.5	1.8	1.4	0.2	83.1	2.7	14.2	0.086	0.558	25.830832	-100.248482
X. C. Monterrey - Nuevo Laredo (Libre)	35.35	3	2	37062	7.4	76.0	2.5	3.9	3.1	3.7	1.7	1.4	0.3	83.4	2.5	14.1	0.069	0.558	25.831020	-100.248038
Apodaca	41.50	1	1	34761	3.6	88.1	1.1	4.9	1.3	0.5	0.2	0.2	0.1	91.7	1.1	7.2	0.069	0.526	25.804589	-100.208019
Apodaca	41.50	1	2	33211	3.6	88.1	1.1	4.9	1.3	0.5	0.2	0.2	0.1	91.7	1.1	7.2	0.079	0.526	25.804772	-100.207906
T. C. Monterrey - Reynosa	48.00	1	1	32668	2.2	89.0	1.0	3.2	1.1	1.4	1.3	0.5	0.3	91.2	1.0	7.8	0.064	0.522	25.668603	-100.172212
T. C. Monterrey - Reynosa	48.00	1	2	32489	2.1	89.4	1.1	3.1	1.0	1.3	1.2	0.6	0.2	91.5	1.1	7.4	0.062	0.522	25.668528	-100.172129

7 CARR: Linares - Ent. San Roberto

CLAVE: 19031

RUTA: MEX-058

AÑO: 2025

LUGAR	ESTACION				CLASIFICACION VEHICULAR EN PORCIENTO										COORDENADAS					
	KM	TE	SC	TDPA	M	A	B	C2	C3	T3S2	T3S3	T3S2R4	OTROS	A	B	C	K'	D	LATITUD	LONGITUD
Linares	0.00	3	0	8471	6.3	77.9	0.6	8.6	0.8	4.3	1.0	0.4	0.1	84.2	0.6	15.2	0.090	0.575	24.833658	-99.579026
Iturbide	44.00	1	0	1954	2.4	72.6	4.4	10.2	3.8	3.3	3.0	0.2	0.1	75.0	4.4	20.6	0.093	0.577	24.723085	-99.897584
T. Izq. Doctor Arroyo	66.00	1	0	3485	1.9	79.6	1.9	11.3	1.6	1.9	1.5	0.1	0.2	81.5	1.9	16.6	0.095	0.542	24.730260	-100.038853
T. C. Matehuala - Ent. Huachichil	98.00	1	0	1143	2.3	71.1	2.8	15.2	2.5	3.9	1.8	0.3	0.1	73.4	2.8	23.8	0.107	0.663	24.675812	-100.295387

NUEVO LEÓN

8 CARR: Matehuala - Ent. Puerto México

CLAVE: 00405

RUTA: MEX-057

AÑO: 2025

LUGAR	ESTACION				CLASIFICACION VEHICULAR EN PORCIENTO										COORDENADAS					
	KM	TE	SC	TDPA	M	A	B	C2	C3	T3S2	T3S3	T3S2R4	OTROS	A	B	C	K'	D	LATITUD	LONGITUD
Matehuala	0.00	3	1	5671	10.9	72.6	3.4	4.2	1.5	5.2	1.0	0.9	0.3	83.5	3.4	13.1	0.100	0.569	23.668950	-100.631987
Matehuala	0.00	3	2	6011	10.6	72.6	3.4	4.3	1.6	5.3	0.9	1.0	0.3	83.2	3.4	13.4	0.093	0.569	23.669125	-100.632103
T. Izq. Cedral	8.47	1	1	4491	7.3	72.4	2.2	8.0	1.4	5.8	1.8	0.9	0.2	79.7	2.2	18.1	0.083	0.551	23.693441	-100.619854
T. Izq. Cedral	8.47	1	2	5007	7.3	73.0	2.0	7.8	1.5	5.8	1.6	0.8	0.2	80.3	2.0	17.7	0.082	0.551	23.693715	-100.620036
T. Izq. Cedral	8.47	3	1	2525	7.7	56.2	4.4	14.2	1.2	10.6	2.7	2.3	0.7	63.9	4.4	31.7	0.088	0.521	23.699757	-100.616733
T. Izq. Cedral	8.47	3	2	2904	7.7	56.2	4.4	14.0	1.3	10.4	3.0	2.3	0.7	63.9	4.4	31.7	0.081	0.521	23.699869	-100.616989
T. Izq. Libramiento de Matehuala (Cuota)	9.30	3	1	9299	1.6	35.5	4.6	8.9	2.2	36.5	4.5	5.3	0.9	37.1	4.6	58.3	0.060	0.531	23.713161	-100.610101
T. Izq. Libramiento de Matehuala (Cuota)	9.30	3	2	8735	1.6	35.9	4.5	8.8	2.2	36.5	4.4	5.3	0.8	37.5	4.5	58.0	0.066	0.531	23.712789	-100.610592
Lim. Edos. Term. S. L. P. Ppia. N. L.	24.64																			
Santa Ana	59.65	1	1	10209	2.3	28.3	3.5	5.3	3.2	46.8	4.2	5.4	1.0	30.6	3.5	65.9	0.063	0.550	24.084508	-100.384866
Santa Ana	59.65	1	2	10014	2.4	28.6	3.6	5.2	3.1	46.7	4.2	5.3	0.9	31.0	3.6	65.4	0.059	0.550	24.084626	-100.385111
T. Der. Linares	128.99	1	1	9860	3.4	41.3	7.1	4.4	2.6	32.1	2.5	5.8	0.8	44.7	7.1	48.2	0.059	0.510	24.611984	-100.274669
T. Der. Linares	128.99	1	2	9600	3.4	40.3	6.9	4.5	2.3	32.6	2.8	6.2	1.0	43.7	6.9	49.4	0.062	0.510	24.612476	-100.275190
T. Der. Linares	128.99	3	1	8819	3.2	35.3	6.8	4.7	2.4	39.1	2.5	5.1	0.9	38.5	6.8	54.7	0.075	0.502	24.689005	-100.301771
T. Der. Linares	128.99	3	2	9253	2.8	36.6	6.7	4.6	2.2	38.8	2.5	5.0	0.8	39.4	6.7	53.9	0.059	0.502	24.689510	-100.302154
San Rafael	177.18	1	1	10604	3.6	36.8	6.1	5.9	2.8	36.7	2.8	4.4	0.9	40.4	6.1	53.5	0.072	0.588	25.023435	-100.546415
San Rafael	177.18	1	2	11237	3.4	37.4	6.2	5.6	2.4	36.6	3.0	4.6	0.8	40.8	6.2	53.0	0.051	0.588	25.022647	-100.545815
T. C. Puerto México - La Carbonera (Cuota)	202.40	1	1	10069	4.0	36.3	6.9	5.4	2.0	37.2	3.0	4.3	0.9	40.3	6.9	52.8	0.070	0.553	25.166538	-100.717788
T. C. Puerto México - La Carbonera (Cuota)	202.40	1	2	9770	4.2	35.0	6.8	5.2	2.3	37.5	3.5	4.6	0.9	39.2	6.8	54.0	0.060	0.553	25.166635	-100.718470

9 CARR: Montemorelos - China

CLAVE: 19280

RUTA: MEX-035

AÑO: 2025

LUGAR	ESTACION				CLASIFICACION VEHICULAR EN PORCIENTO										COORDENADAS					
	KM	TE	SC	TDPA	M	A	B	C2	C3	T3S2	T3S3	T3S2R4	OTROS	A	B	C	K'	D	LATITUD	LONGITUD
Montemorelos	0.00	3	0	10545	5.4	78.3	1.0	9.4	1.5	3.1	0.7	0.5	0.1	83.7	1.0	15.3	0.080	0.543	25.194658	-99.812354
Gral. Terán	17.60	3	0	2641	2.7	76.0	1.5	12.3	1.9	2.4	1.9	1.1	0.2	78.7	1.5	19.8	0.084	0.557	25.249835	-99.661464
T. Der. La Barreta	23.10	3	0	2147	2.7	82.3	2.6	7.3	1.5	2.6	0.4	0.5	0.1	85.0	2.6	12.4	0.093	0.665	25.259147	-99.643389
China	93.00	1	0	1966	2.8	87.8	1.0	3.4	1.2	2.4	0.4	0.9	0.1	90.6	1.0	8.4	0.086	0.586	25.688813	-99.243692

10 CARR: Monterrey - Castaños

CLAVE: 00128

RUTA: MEX-053

AÑO: 2025

LUGAR	ESTACION				CLASIFICACION VEHICULAR EN PORCIENTO										COORDENADAS					
	KM	TE	SC	TDPA	M	A	B	C2	C3	T3S2	T3S3	T3S2R4	OTROS	A	B	C	K'	D	LATITUD	LONGITUD
T. C. Monterrey - Nuevo Laredo	0.00	3	0	21643	6.1	76.4	1.3	7.1	2.4	3.8	1.3	1.4	0.2	82.5	1.3	16.2	0.084	0.531	25.817413	-100.292099
X. C. Libramiento Noroeste de Monterrey	3.46	3	1	21705	4.0	75.3	1.7	6.8	3.4	5.3	1.2	1.8	0.5	79.3	1.7	19.0	0.077	0.563	25.832560	-100.308504

NUEVO LEÓN

10 CARR: Monterrey - Castaños

CLAVE: 00128

RUTA: MEX-053

AÑO: 2025

LUGAR	ESTACION				CLASIFICACION VEHICULAR EN PORCIENTO										COORDENADAS					
	KM	TE	SC	TDPA	M	A	B	C2	C3	T3S2	T3S3	T3S2R4	OTROS	A	B	C	K'	D	LATITUD	LONGITUD
X. C. Libramiento Noroeste de Monterrey	3.46	3	2	19311	4.1	75.5	2.0	7.0	3.2	5.1	1.3	1.6	0.2	79.6	2.0	18.4	0.074	0.563	25.832728	-100.308875
T. Der. Villa del Carmen	13.80	1	1	8902	2.0	76.7	1.6	6.9	3.1	4.7	2.5	2.0	0.5	78.7	1.6	19.7	0.080	0.524	25.891930	-100.349032
T. Der. Villa del Carmen	13.80	1	2	9049	1.9	77.4	1.5	7.0	3.1	4.5	2.3	1.8	0.5	79.3	1.5	19.2	0.071	0.524	25.891904	-100.349079
T. Izq. Hidalgo	24.78	1	0	15077	3.1	77.1	2.2	7.0	1.9	4.5	1.8	1.9	0.5	80.2	2.2	17.6	0.071	0.596	25.956160	-100.424557
T. Izq. Hidalgo	24.78	3	0	12174	3.7	73.9	2.3	5.8	2.5	5.8	3.2	2.3	0.5	77.6	2.3	20.1	0.070	0.523	25.982537	-100.451818
T. Izq. Mina	34.75	1	0	8814	2.5	72.7	2.3	6.7	2.3	5.7	4.0	3.1	0.7	75.2	2.3	22.5	0.068	0.570	26.000701	-100.516205
T. Izq. Espinazo	91.90	1	0	4009	1.6	63.7	2.9	5.2	2.5	14.1	4.9	4.1	1.0	65.3	2.9	31.8	0.080	0.602	26.360301	-100.874788
T. Izq. Espinazo	91.90	3	0	3956	1.8	62.5	3.0	5.5	2.5	14.3	5.1	4.3	1.0	64.3	3.0	32.7	0.078	0.570	26.365326	-100.883194
Lim. Edos. Term. N. L. Ppia. Coah.	115.90																			
T. C. Saltillo - Monclova	155.90	1	1	2310	2.0	61.0	4.4	5.3	3.1	12.3	6.4	4.5	1.0	63.0	4.4	32.6	0.085	0.597	26.692074	-101.382690
T. C. Saltillo - Monclova	155.90	1	2	2376	2.2	60.6	4.5	5.1	3.4	12.5	5.9	4.7	1.1	62.8	4.5	32.7	0.088	0.597	26.692235	-101.382893

11 CARR: Monterrey - Mier

CLAVE: 00127

RUTA: MEX-054

AÑO: 2025

LUGAR	ESTACION				CLASIFICACION VEHICULAR EN PORCIENTO										COORDENADAS					
	KM	TE	SC	TDPA	M	A	B	C2	C3	T3S2	T3S3	T3S2R4	OTROS	A	B	C	K'	D	LATITUD	LONGITUD
Monterrey	0.00																			
Apodaca	19.12	1	1	73870	4.3	86.9	1.0	3.4	1.0	1.8	0.4	0.9	0.3	91.2	1.0	7.8	0.056	0.540	25.750522	-100.200017
Apodaca	19.12	1	2	77601	4.2	87.2	1.0	3.4	1.2	1.5	0.5	0.7	0.3	91.4	1.0	7.6	0.066	0.540	25.750885	-100.200009
X. C. Libramiento Noroeste de Monterrey	21.30	3	1	46538	3.8	82.0	1.7	4.2	1.4	3.7	1.2	1.7	0.3	85.8	1.7	12.5	0.077	0.534	25.784569	-100.160133
X. C. Libramiento Noroeste de Monterrey	21.30	3	2	48348	4.1	81.6	1.9	4.1	1.5	3.5	1.3	1.5	0.5	85.7	1.9	12.4	0.062	0.534	25.784687	-100.160370
X. C. Zacatecas - Pesquería	28.15	1	1	22996	2.7	77.0	2.1	9.6	2.1	2.8	1.4	1.6	0.7	79.7	2.1	18.2	0.077	0.529	25.795066	-100.115797
X. C. Zacatecas - Pesquería	28.15	1	2	23024	2.8	77.4	2.3	9.5	2.1	2.7	1.3	1.4	0.5	80.2	2.3	17.5	0.067	0.529	25.795150	-100.115898
X. C. Zacatecas - Pesquería	28.15	3	0	10510	2.6	78.2	2.4	5.8	2.7	3.5	1.9	2.1	0.8	80.8	2.4	16.8	0.098	0.585	25.808192	-100.088540
X. C. Hacienda Guadalupe - Higuera	38.10	1	0	11355	2.9	79.2	2.3	5.9	1.9	3.8	1.2	2.1	0.7	82.1	2.3	15.6	0.077	0.556	25.846080	-100.033386
X. C. Hacienda Guadalupe - Higuera	38.10	3	0	5290	3.1	74.5	1.5	9.3	1.3	3.6	1.4	4.5	0.8	77.6	1.5	20.9	0.081	0.558	25.854126	-100.015139
Dr. González	47.60	1	0	2232	2.6	88.6	0.9	4.0	1.2	1.8	0.5	0.3	0.1	91.2	0.9	7.9	0.086	0.539	25.851298	-99.966293
Dr. González	47.60	3	0	494	9.1	75.3	4.2	9.1	0.8	0.8	0.2	0.4	0.1	84.4	4.2	11.4	0.111	0.600	25.866507	-99.927754
T. Der. Empalme Los Ramones	74.10	1	0	2964	3.7	72.4	2.2	3.5	1.2	5.6	2.2	8.3	0.9	76.1	2.2	21.7	0.092	0.662	25.922586	-99.722211
Cerralvo	95.95	1	0	4449	3.3	75.8	1.6	4.6	1.4	4.1	1.5	7.0	0.7	79.1	1.6	19.3	0.088	0.562	26.065199	-99.626511
Gral. Treviño	115.80	3	0	1772	3.4	65.1	2.9	5.8	1.4	6.2	2.1	12.6	0.5	68.5	2.9	28.6	0.111	0.645	26.232186	-99.470432
Lim. Edos. Term. N. L. Ppia. Tamps.	131.80																			
Mier	156.21	1	0	2848	1.6	74.6	1.8	2.7	1.7	6.4	1.7	9.2	0.3	76.2	1.8	22.0	0.097	0.564	26.425110	-99.166212

NUEVO LEÓN

12 CARR: Monterrey - Nuevo Laredo (Libre)

CLAVE: 00463

RUTA: MEX-085

AÑO: 2025

LUGAR	ESTACION				CLASIFICACION VEHICULAR EN PORCIENTO										COORDENADAS					
	KM	TE	SC	TDPA	M	A	B	C2	C3	T3S2	T3S3	T3S2R4	OTROS	A	B	C	K'	D	LATITUD	LONGITUD
Monterrey	0.00																			
T. Izq. Gral. Escobedo (Central)	12.10	3	1	45383	3.4	88.5	1.4	3.2	0.7	1.7	0.4	0.5	0.2	91.9	1.4	6.7	0.067	0.547	25.800598	-100.277105
T. Izq. Gral. Escobedo (Lateral)	12.10	3	1	18400	5.1	83.0	1.8	6.3	1.3	1.3	0.4	0.6	0.2	88.1	1.8	10.1	0.082	0.547	25.800568	-100.277028
T. Izq. Gral. Escobedo (Lateral)	12.10	3	2	19535	5.1	84.4	1.5	6.1	1.2	0.9	0.3	0.4	0.1	89.5	1.5	9.0	0.067	0.547	25.800690	-100.277300
T. Izq. Gral. Escobedo (Central)	12.10	3	2	48653	3.3	88.2	1.2	3.5	0.9	1.9	0.4	0.5	0.1	91.5	1.2	7.3	0.076	0.547	25.800662	-100.277202
X. C. Libramiento Noroeste de Monterrey (Lateral)	16.00	1	1	9517	1.5	77.3	2.5	11.4	2.3	3.4	0.8	0.5	0.3	78.8	2.5	18.7	0.081	0.542	25.820393	-100.264950
X. C. Libramiento Noroeste de Monterrey (Central)	16.00	1	1	42502	2.7	86.9	1.3	3.4	1.3	2.6	0.8	0.7	0.3	89.6	1.3	9.1	0.076	0.542	25.820434	-100.265036
X. C. Libramiento Noroeste de Monterrey (Lateral)	16.00	1	2	8233	1.7	77.3	2.5	10.8	2.5	3.8	0.8	0.4	0.2	79.0	2.5	18.5	0.101	0.542	25.820564	-100.265204
X. C. Libramiento Noroeste de Monterrey (Central)	16.00	1	2	41655	2.5	87.6	1.2	3.4	1.3	2.5	0.7	0.6	0.2	90.1	1.2	8.7	0.075	0.542	25.820532	-100.265118
X. C. Libramiento Noroeste de Monterrey	16.00	3	1	56466	3.2	74.6	2.1	5.6	3.3	8.5	1.1	1.1	0.5	77.8	2.1	20.1	0.080	0.569	25.835529	-100.254490
X. C. Libramiento Noroeste de Monterrey	16.00	3	2	55253	3.0	74.8	1.8	5.9	3.2	8.6	1.0	1.3	0.4	77.8	1.8	20.4	0.085	0.569	25.836104	-100.254236
X. C. Anillo Periférico de Monterrey (Cuota)	17.40																			
X. C. Santa Rosa - Salinas Victoria	20.19	3	1	43511	4.3	66.6	2.8	5.9	2.7	14.4	1.0	1.9	0.4	70.9	2.8	26.3	0.082	0.608	25.862859	-100.235355
X. C. Santa Rosa - Salinas Victoria	20.19	3	2	43441	4.7	65.3	3.0	6.2	2.6	14.4	1.2	2.1	0.5	70.0	3.0	27.0	0.068	0.608	25.858291	-100.238759
T. C. Monterrey - Nuevo Laredo (Cuota)	23.99																			
Ciénega de Flores	32.00	1	0	27171	4.2	76.9	2.9	6.6	1.3	7.2	0.3	0.4	0.2	81.1	2.9	16.0	0.070	0.511	25.942263	-100.178513
T. Der. Agualeguas	78.23	3	0	6584	2.6	49.2	2.8	6.4	2.5	34.4	1.0	1.0	0.1	51.8	2.8	45.4	0.077	0.589	26.335656	-100.111693
Sabinas Hidalgo	98.90	3	0	5116	2.5	45.1	4.1	7.7	2.6	34.8	1.4	1.6	0.2	47.6	4.1	48.3	0.086	0.656	26.532715	-100.150836
Vallecillos	124.40	3	0	4199	3.0	36.9	3.3	8.2	2.4	42.1	1.6	2.1	0.4	39.9	3.3	56.8	0.070	0.680	26.663281	-99.980298
T. Izq. Anáhuac	156.80	1	0	5036	3.1	43.7	3.9	6.9	3.5	36.0	1.5	1.2	0.2	46.8	3.9	49.3	0.057	0.594	26.875090	-99.832416
T. Izq. Anáhuac	156.80	3	1	8316	2.2	35.9	4.9	6.6	2.9	44.5	1.1	1.5	0.4	38.1	4.9	57.0	0.074	0.535	26.903847	-99.809360
T. Izq. Anáhuac	156.80	3	2	8534	2.0	35.6	5.0	6.4	3.0	44.6	1.3	1.7	0.4	37.6	5.0	57.4	0.064	0.535	26.903548	-99.809881
Lim. Edos. Term. N. L. Ppia. Tamps.	184.56																			
T. Der. Mier	205.90	1	1	11103	1.7	38.0	4.2	4.2	2.7	46.0	0.8	1.9	0.5	39.7	4.2	56.1	0.087	0.659	27.288843	-99.604889
T. Der. Mier	205.90	1	2	11996	1.6	37.4	4.2	4.4	3.0	46.0	0.9	1.9	0.6	39.0	4.2	56.8	0.065	0.659	27.289045	-99.604940
T. Der. Mier	205.90	3	1	8137	0.8	44.6	4.5	9.3	5.5	33.1	0.9	1.0	0.3	45.4	4.5	50.1	0.075	0.546	27.308031	-99.594639
T. Der. Mier	205.90	3	2	8145	0.9	44.9	4.3	9.2	5.4	33.1	0.9	1.0	0.3	45.8	4.3	49.9	0.078	0.546	27.308415	-99.594595
Nuevo Laredo	228.00	1	1	12856	1.0	64.9	1.6	7.5	4.3	18.2	0.8	1.3	0.4	65.9	1.6	32.5	0.058	0.504	27.375317	-99.558679
Nuevo Laredo	228.00	1	2	13251	1.2	64.2	1.8	7.2	4.6	18.0	1.0	1.5	0.5	65.4	1.8	32.8	0.053	0.504	27.375375	-99.558834

13 CARR: Monterrey - Reynosa (Libre)

CLAVE: 00088

RUTA: MEX-040

AÑO: 2025

LUGAR	ESTACION				CLASIFICACION VEHICULAR EN PORCIENTO										COORDENADAS					
	KM	TE	SC	TDPA	M	A	B	C2	C3	T3S2	T3S3	T3S2R4	OTROS	A	B	C	K'	D	LATITUD	LONGITUD
T. C. Monterrey - Mier	0.00																			

NUEVO LEÓN

13 CARR: Monterrey - Reynosa (Libre)

CLAVE: 00088

RUTA: MEX-040

AÑO: 2025

LUGAR	ESTACION				CLASIFICACION VEHICULAR EN PORCIENTO										COORDENADAS					
	KM	TE	SC	TDPA	M	A	B	C2	C3	T3S2	T3S3	T3S2R4	OTROS	A	B	C	K'	D	LATITUD	LONGITUD
Villa Juárez	19.10	1	1	28546	4.8	84.9	1.2	5.2	1.1	1.0	0.6	0.8	0.4	89.7	1.2	9.1	0.070	0.534	25.652030	-100.108453
Villa Juárez	19.10	1	2	26458	4.7	84.1	1.4	5.5	1.1	1.1	0.7	0.9	0.5	88.8	1.4	9.8	0.061	0.534	25.652146	-100.108427
Villa Juárez	19.10	3	1	19686	7.2	81.3	1.3	4.9	1.6	1.2	0.4	1.5	0.6	88.5	1.3	10.2	0.075	0.573	25.636655	-100.083550
Villa Juárez	19.10	3	2	18224	7.1	82.2	1.2	4.5	1.5	1.1	0.5	1.3	0.6	89.3	1.2	9.5	0.068	0.573	25.636800	-100.083563
Puente Cadereyta	30.50	2	1	3364	3.1	78.6	0.5	5.3	3.8	4.2	1.2	2.1	1.2	81.7	0.5	17.8	0.091	0.500	25.601114	-100.005696
Puente Cadereyta	30.50	2	2	3364	3.1	78.6	0.5	5.3	3.8	4.2	1.2	2.1	1.2	81.7	0.5	17.8	0.091	0.500	25.601114	-100.005696
T. C. Monterrey - Cadereyta (Cuota)	31.50																			
T. C. Cadereyta - Reynosa (Cuota)	32.80																			
Refinería de Cadereyta	33.00	3	0	7853	3.4	81.8	1.5	3.5	1.6	4.8	1.5	1.4	0.5	85.2	1.5	13.3	0.083	0.529	25.595023	-99.923768
T. Izq. Los Ramones	68.78	3	0	3326	1.5	77.4	1.8	5.8	1.8	7.3	2.7	1.5	0.2	78.9	1.8	19.3	0.091	0.525	25.620379	-99.626308
China	114.10																			
Gral. Bravo	125.00	1	0	8656	1.7	78.7	1.3	5.8	1.5	6.7	2.3	1.6	0.4	80.4	1.3	18.3	0.080	0.564	25.774772	-99.190228
T. C. Cadereyta - Reynosa (Cuota)	178.00																			
Lim. Edos. Term. N. L. Ppia. Tamps.	192.00																			
T. Izq. Díaz Ordáz	192.55	1	1	5196	2.3	63.3	3.6	4.9	2.1	15.7	3.3	3.9	0.9	65.6	3.6	30.8	0.098	0.534	25.967499	-98.594053
T. Izq. Díaz Ordáz	192.55	1	2	5517	2.2	64.6	3.6	4.7	2.0	14.8	3.2	4.0	0.9	66.8	3.6	29.6	0.104	0.534	25.968054	-98.593935
T. Der. Libramiento de Reynosa Sur II	206.33	1	1	6094	2.4	67.1	3.7	4.8	1.9	12.6	3.0	3.7	0.8	69.5	3.7	26.8	0.091	0.514	26.016520	-98.467463
T. Der. Libramiento de Reynosa Sur II	206.33	1	2	6702	2.5	66.1	3.7	4.9	2.1	12.8	3.1	3.9	0.9	68.6	3.7	27.7	0.091	0.514	26.017067	-98.467414
Reynosa	225.00	1	1	24557	2.0	84.4	2.0	4.6	1.3	3.9	0.7	0.9	0.2	86.4	2.0	11.6	0.083	0.556	26.042119	-98.402212
Reynosa	225.00	1	2	23338	2.4	82.5	2.0	5.1	1.6	4.1	0.9	1.2	0.2	84.9	2.0	13.1	0.090	0.556	26.042589	-98.401950

14 CARR: Nuevo Laredo - Piedras Negras

CLAVE: 00503

RUTA: MEX-002

AÑO: 2025

LUGAR	ESTACION				CLASIFICACION VEHICULAR EN PORCIENTO										COORDENADAS					
	KM	TE	SC	TDPA	M	A	B	C2	C3	T3S2	T3S3	T3S2R4	OTROS	A	B	C	K'	D	LATITUD	LONGITUD
Nuevo Laredo	0.00	3	1	11393	2.6	47.4	2.0	5.4	16.3	24.6	0.6	0.8	0.3	50.0	2.0	48.0	0.104	0.583	27.549943	-99.579595
Nuevo Laredo	0.00	3	2	12175	2.4	48.2	2.2	5.2	16.0	24.4	0.5	0.7	0.4	50.6	2.2	47.2	0.095	0.583	27.549949	-99.579757
T. Izq. Libramiento de Nuevo Laredo	13.00	3	1	5181	7.4	44.4	1.6	5.4	13.1	24.7	1.1	1.5	0.8	51.8	1.6	46.6	0.097	0.650	27.572755	-99.603986
T. Izq. Libramiento de Nuevo Laredo	13.00	3	2	5990	7.7	44.2	1.5	5.3	12.9	24.6	1.3	1.5	1.0	51.9	1.5	46.6	0.103	0.650	27.572661	-99.604046
Lim. Edos. Term. N. L. Ppia. Tamps.	32.50																			
T. C. Monclova - Colombia	36.18	1	0	2838	2.1	64.8	1.6	8.5	3.2	15.6	1.8	2.0	0.4	66.9	1.6	31.5	0.097	0.514	27.688676	-99.778445
Lim. Edos. Term. Coah. Ppia. N. L.	46.18																			
Guerrero	127.00	1	0	900	2.9	56.8	3.5	5.8	3.5	17.1	1.1	8.6	0.7	59.7	3.5	36.8	0.100	0.600	28.307335	-100.364177
T. Izq. Villa Unión	131.58	1	0	1093	3.9	54.0	2.6	9.8	3.7	16.4	1.4	7.2	1.0	57.9	2.6	39.5	0.123	0.582	28.332963	-100.388549
T. Izq. Villa Unión	131.58	3	0	1139	2.7	61.6	2.5	5.6	4.2	14.6	0.8	7.1	0.9	64.3	2.5	33.2	0.102	0.612	28.344494	-100.392054

NUEVO LEÓN

14 CARR: Nuevo Laredo - Piedras Negras

CLAVE: 00503

RUTA: MEX-002

AÑO: 2025

LUGAR	ESTACION				CLASIFICACION VEHICULAR EN PORCIENTO													COORDENADAS		
	KM	TE	SC	TDPA	M	A	B	C2	C3	T3S2	T3S3	T3S2R4	OTROS	A	B	C	K'	D	LATITUD	LONGITUD
El Saucito	151.10	1	0	1255	1.3	63.4	3.9	6.0	4.4	12.2	0.8	6.8	1.2	64.7	3.9	31.4	0.098	0.642	28.501897	-100.467312
T. C. Monclova - Piedras Negras	169.30	1	1	6151	2.5	84.9	1.5	3.7	4.0	2.4	0.6	0.3	0.1	87.4	1.5	11.1	0.080	0.565	28.639631	-100.551887
T. C. Monclova - Piedras Negras	169.30	1	2	5812	2.5	85.4	1.5	3.8	3.5	2.2	0.6	0.4	0.1	87.9	1.5	10.6	0.070	0.565	28.639572	-100.551995

15 CARR: Paras - Nueva Ciudad Guerrero

CLAVE: 00476

RUTA: MEX-030

AÑO: 2025

LUGAR	ESTACION				CLASIFICACION VEHICULAR EN PORCIENTO													COORDENADAS		
	KM	TE	SC	TDPA	M	A	B	C2	C3	T3S2	T3S3	T3S2R4	OTROS	A	B	C	K'	D	LATITUD	LONGITUD
Paras	0.00	3	0	424	0.6	67.4	1.1	23.0	1.3	2.0	2.1	2.5	0.0	68.0	1.1	30.9	0.101	0.651	26.502014	-99.516143
Lim. Edos. Term. N. L. Ppia. Tamps.	13.10																			
T. C. Reynosa - (T. C. Monterrey - Nuevo Laredo)	32.00	1	0	455	0.0	75.1	1.1	14.9	1.1	1.7	2.0	4.1	0.0	75.1	1.1	23.8	0.097	0.818	26.554998	-99.244292

16 CARR: Ramal a Aeropuerto Mariano Escobedo

CLAVE: 19510

RUTA: MEX-054

AÑO: 2025

LUGAR	ESTACION				CLASIFICACION VEHICULAR EN PORCIENTO													COORDENADAS		
	KM	TE	SC	TDPA	M	A	B	C2	C3	T3S2	T3S3	T3S2R4	OTROS	A	B	C	K'	D	LATITUD	LONGITUD
T. C. Monterrey - Cd. Mier	0.00	3	1	25746	2.0	85.2	1.2	3.9	1.8	3.8	0.7	0.9	0.5	87.2	1.2	11.6	0.065	0.548	25.788215	-100.138388
T. C. Monterrey - Cd. Mier	0.00	3	2	26677	1.8	85.0	1.5	4.0	1.6	3.9	0.9	1.1	0.2	86.8	1.5	11.7	0.067	0.548	25.788399	-100.138425
Aeropuerto	2.40																			

17 CARR: Saltillo - Monterrey

CLAVE: 00087

RUTA: MEX-040

AÑO: 2025

LUGAR	ESTACION				CLASIFICACION VEHICULAR EN PORCIENTO													COORDENADAS		
	KM	TE	SC	TDPA	M	A	B	C2	C3	T3S2	T3S3	T3S2R4	OTROS	A	B	C	K'	D	LATITUD	LONGITUD
T. C. Saltillo - Arteaga	0.00																			
T. Izq. Zinacamex	4.25	3	1	55137	1.9	90.8	0.8	3.6	0.9	0.7	0.2	0.9	0.2	92.7	0.8	6.5	0.092	0.634	25.486317	-100.970426
T. Izq. Zinacamex	4.25	3	2	50720	1.9	90.9	0.8	3.5	0.9	0.7	0.2	0.9	0.2	92.8	0.8	6.4	0.077	0.634	25.486769	-100.970395
Ramos Arizpe	11.30	1	1	49032	1.7	86.9	1.4	4.7	1.0	1.8	1.3	0.9	0.3	88.6	1.4	10.0	0.080	0.585	25.515917	-100.957492
Ramos Arizpe	11.30	1	2	50825	1.7	87.4	1.2	4.5	1.0	1.8	1.3	0.9	0.2	89.1	1.2	9.7	0.079	0.585	25.516005	-100.957688
T. Der. Aeropuerto	13.00	3	1	40080	3.5	79.6	2.7	6.9	1.4	4.1	1.2	0.5	0.1	83.1	2.7	14.2	0.114	0.648	25.554130	-100.927980
T. Der. Aeropuerto	13.00	3	2	41170	3.4	79.3	2.7	7.1	1.3	4.1	1.2	0.6	0.3	82.7	2.7	14.6	0.105	0.648	25.554312	-100.928059
T. Der. Libramiento J.L.P.	16.00	3	1	36199	2.9	75.7	2.4	7.6	2.1	7.0	0.8	1.2	0.3	78.6	2.4	19.0	0.118	0.721	25.567992	-100.912259
T. Der. Libramiento J.L.P.	16.00	3	2	35356	2.8	76.0	2.1	7.7	1.8	7.2	0.8	1.2	0.4	78.8	2.1	19.1	0.082	0.721	25.564719	-100.915639
Ojo Caliente	26.30	1	1	21215	3.3	56.0	3.9	5.6	1.9	24.2	2.3	2.4	0.4	59.3	3.9	36.8	0.078	0.576	25.610963	-100.843468
Ojo Caliente	26.30	1	2	21904	3.3	55.9	3.9	5.5	2.1	24.3	2.2	2.2	0.6	59.2	3.9	36.9	0.089	0.576	25.612554	-100.850966

NUEVO LEÓN

17 CARR: Saltillo - Monterrey

CLAVE: 00087

RUTA: MEX-040

AÑO: 2025

LUGAR	ESTACION				CLASIFICACION VEHICULAR EN PORCIENTO													COORDENADAS			
	KM	TE	SC	TDPA	M	A	B	C2	C3	T3S2	T3S3	T3S2R4	OTROS	A	B	C	K'	D	LATITUD	LONGITUD	
Lim. Edos. Term. Coah. Ppia. N. L.	33.00																				
T. Izq. Libramiento Noroeste de Monterrey	54.00	1	1	17574	2.5	55.5	4.0	7.6	2.4	21.5	2.5	3.6	0.4	58.0	4.0	38.0	0.085	0.532	25.698312	-100.562343	
T. Izq. Libramiento Noroeste de Monterrey	54.00	1	2	18746	2.6	54.2	4.0	7.6	2.4	22.7	2.7	3.4	0.4	56.8	4.0	39.2	0.077	0.532	25.698666	-100.562657	
T. Der. Santa Catarina (1º Acceso)	62.46	1	1	38616	2.4	83.0	1.9	6.8	1.2	2.6	1.3	0.6	0.2	85.4	1.9	12.7	0.064	0.503	25.687472	-100.495610	
T. Der. Santa Catarina (1º Acceso)	62.46	1	2	37022	2.3	83.2	2.0	6.8	0.9	2.5	1.3	0.8	0.2	85.5	2.0	12.5	0.070	0.503	25.687695	-100.495562	
Ppia. Monterrey	79.20	1	1	63790	2.0	85.9	1.1	5.6	1.2	1.8	1.3	0.7	0.4	87.9	1.1	11.0	0.072	0.522	25.674396	-100.426438	
Ppia. Monterrey	79.20	1	2	60693	2.0	85.9	1.1	5.6	1.2	1.9	1.2	0.7	0.4	87.9	1.1	11.0	0.068	0.522	25.674546	-100.426429	

18 CARR: Cadereyta - Reynosa (Cuota)

CLAVE: 19002

RUTA: MEX-040D

AÑO: 2025

LUGAR	ESTACION				CLASIFICACION VEHICULAR EN PORCIENTO													COORDENADAS			
	KM	TE	SC	TDPA	M	A	B	C2	C3	T3S2	T3S3	T3S2R4	OTROS	A	B	C	K'	D	LATITUD	LONGITUD	
Cadereyta de Jiménez	34.99																				
X. C. Cadereyta de Jiménez - Doctor González	37.00	3	1	4384	3.3	64.6	4.2	3.0	2.2	14.3	2.8	4.8	0.8	67.9	4.2	27.9	0.118	0.530	25.600010	-99.941225	
X. C. Cadereyta de Jiménez - Doctor González	37.00	3	2	4411	3.2	65.2	3.9	3.2	1.7	14.5	2.6	5.0	0.7	68.4	3.9	27.7	0.122	0.530	25.600269	-99.941250	
T. Izq. Los Ramones	70.60	3	1	3926	2.1	64.0	3.8	3.0	1.8	16.6	2.0	5.9	0.8	66.1	3.8	30.1	0.132	0.690	25.671328	-99.618806	
T. Izq. Los Ramones	70.60	3	2	4031	2.1	64.9	3.7	2.9	1.8	15.8	2.2	5.7	0.9	67.0	3.7	29.3	0.127	0.690	25.671501	-99.619031	
X. C. Ramal a Cerralvo	98.70	3	1	4025	2.3	60.7	5.0	3.6	1.9	18.0	2.5	5.3	0.7	63.0	5.0	32.0	0.116	0.591	25.758888	-99.370498	
X. C. Ramal a Cerralvo	98.70	3	2	4332	2.6	58.5	5.3	3.8	2.0	18.6	2.8	5.6	0.8	61.1	5.3	33.6	0.107	0.591	25.759155	-99.370528	
Plaza de Cobro General Bravo	120.00	2	1	3253	0.1	62.1	2.7	3.4	2.8	19.2	2.2	6.0	1.5	62.2	2.7	35.1	0.096	0.500	25.813517	-99.169575	
Plaza de Cobro General Bravo	120.00	2	2	3253	0.1	62.1	2.7	3.4	2.8	19.2	2.2	6.0	1.5	62.2	2.7	35.1	0.096	0.500	25.813517	-99.169575	
T. C. Monterrey - Reynosa (Libre)	166.90	1	1	3937	2.1	60.6	4.5	3.6	2.3	18.8	2.3	4.9	0.9	62.7	4.5	32.8	0.096	0.531	25.918006	-98.721301	
T. C. Monterrey - Reynosa (Libre)	166.90	1	2	4005	2.0	61.1	4.3	3.5	2.3	18.7	2.2	4.9	1.0	63.1	4.3	32.6	0.093	0.531	25.918245	-98.721411	

19 CARR: Monterrey - Nuevo Laredo (Cuota)

CLAVE: 19086

RUTA: MEX-085D

AÑO: 2025

LUGAR	ESTACION				CLASIFICACION VEHICULAR EN PORCIENTO													COORDENADAS		
	KM	TE	SC	TDPA	M	A	B	C2	C3	T3S2	T3S3	T3S2R4	OTROS	A	B	C	K'	D	LATITUD	LONGITUD
T. C. Monterrey - Nuevo Laredo	24.00	3	1	16519	2.8	56.2	3.2	6.5	3.0	26.1	1.0	0.9	0.3	59.0	3.2	37.8	0.101	0.652	25.899761	-100.224256
T. C. Monterrey - Nuevo Laredo	24.00	3	2	17861	2.5	56.2	3.4	6.3	3.2	25.9	1.3	0.8	0.4	58.7	3.4	37.9	0.085	0.652	25.899680	-100.224542
X. C. Salinas Victoria - Ciénega de Flores	30.65	3	1	18349	1.5	55.6	3.3	5.2	2.5	29.5	1.0	1.1	0.3	57.1	3.3	39.6	0.075	0.510	25.944639	-100.223081
X. C. Salinas Victoria - Ciénega de Flores	30.65	3	2	19164	1.3	55.4	3.2	5.0	2.7	29.8	0.9	1.3	0.4	56.7	3.2	40.1	0.073	0.510	25.944884	-100.223305
X. C. Agualeguas - El Ébano	79.60	3	1	8754	3.2	37.1	3.4	3.5	2.7	47.2	0.8	1.6	0.5	40.3	3.4	56.3	0.067	0.545	26.352810	-100.067349
X. C. Agualeguas - El Ébano	79.60	3	2	8579	3.2	37.2	3.6	3.5	2.5	47.2	0.7	1.6	0.5	40.4	3.6	56.0	0.067	0.545	26.352958	-100.067616
Plaza de Cobro Sabinas	99.30	2	1	7076	0.1	26.4	2.5	2.2	2.4	62.4	0.8	2.1	1.1	26.5	2.5	71.0	0.091	0.500	26.512100	-100.007195

NUEVO LEÓN

19 CARR: Monterrey - Nuevo Laredo (Cuota)

CLAVE: 19086

RUTA: MEX-085D

AÑO: 2025

LUGAR	ESTACION				CLASIFICACION VEHICULAR EN PORCIENTO										COORDENADAS					
	KM	TE	SC	TDPA	M	A	B	C2	C3	T3S2	T3S3	T3S2R4	OTROS	A	B	C	K'	D	LATITUD	LONGITUD
Plaza de Cobro Sabinas	99.30	2	2	7076	0.1	26.4	2.5	2.2	2.4	62.4	0.8	2.1	1.1	26.5	2.5	71.0	0.091	0.500	26.512100	-100.007195
Plaza de Cobro Sabinas	99.30	3	1	8493	3.4	28.7	3.2	2.1	2.5	56.8	0.7	2.0	0.6	32.1	3.2	64.7	0.062	0.553	26.515511	-100.005500
Plaza de Cobro Sabinas	99.30	3	2	7547	3.3	28.8	3.2	2.1	2.5	56.8	0.7	2.0	0.6	32.1	3.2	64.7	0.081	0.553	26.515898	-100.005654
X. C. Palo Alto - Vallecillos	115.50	3	1	9452	1.7	21.7	4.5	2.6	2.4	64.0	0.5	2.0	0.6	23.4	4.5	72.1	0.063	0.510	26.645560	-99.940777
X. C. Palo Alto - Vallecillos	115.50	3	2	8415	1.9	21.4	4.6	2.7	2.5	63.9	0.5	1.9	0.6	23.3	4.6	72.1	0.073	0.510	26.645680	-99.941037
T. C. Monterrey - Nuevo Laredo (Libre)	145.28	1	1	8554	2.6	32.6	4.5	5.0	2.6	49.3	1.3	1.6	0.5	35.2	4.5	60.3	0.077	0.638	26.868087	-99.829556
T. C. Monterrey - Nuevo Laredo (Libre)	145.28	1	2	8827	2.7	32.9	4.4	4.9	2.7	49.2	1.2	1.5	0.5	35.6	4.4	60.0	0.081	0.638	26.877666	-99.823733
Plaza de Cobro Ex-Garita	192.30	2	1	4633	0.1	30.0	3.5	2.4	2.4	58.1	0.6	2.4	0.5	30.1	3.5	66.4	0.090	0.500	27.270497	-99.613956
Plaza de Cobro Ex-Garita	192.30	2	2	4633	0.1	30.0	3.5	2.4	2.4	58.1	0.6	2.4	0.5	30.1	3.5	66.4	0.090	0.500	27.270497	-99.613956

20 CARR: Puerto México - La Carbonera (Cuota)

CLAVE: 00115

RUTA: MEX-057D

AÑO: 2025

LUGAR	ESTACION				CLASIFICACION VEHICULAR EN PORCIENTO										COORDENADAS					
	KM	TE	SC	TDPA	M	A	B	C2	C3	T3S2	T3S3	T3S2R4	OTROS	A	B	C	K'	D	LATITUD	LONGITUD
Ent. Puerto México	202.00																			
Plaza de Cobro Los Chorros	203.64	2	1	7303	0.2	31.1	4.4	4.0	1.9	46.0	4.1	6.3	2.0	31.3	4.4	64.3	0.076	0.500	25.186696	-100.731988
Plaza de Cobro Los Chorros	203.64	2	2	7303	0.2	31.1	4.4	4.0	1.9	46.0	4.1	6.3	2.0	31.3	4.4	64.3	0.076	0.500	25.186696	-100.731988
Lim. Edos. Term. N. L. Ppia. Coah.	204.07																			
Lim. Edos. Term. Coah. Ppia. N. L.	204.50																			
Lim. Edos. Term. N. L. Ppia. Coah.	205.76																			
T. Izq. Huachichil	213.39	1	1	7760	2.2	58.1	6.3	2.4	1.5	22.7	1.3	4.7	0.8	60.3	6.3	33.4	0.069	0.530	25.245015	-100.793735
T. Izq. Huachichil	213.39	1	2	7837	2.1	58.3	6.4	2.5	1.3	22.9	1.4	4.5	0.6	60.4	6.4	33.2	0.069	0.530	25.244977	-100.793831
T. Der. San Antonio de Las Alazanas	224.94	1	1	9529	3.2	39.7	5.4	6.2	2.0	35.8	2.4	4.4	0.9	42.9	5.4	51.7	0.065	0.503	25.345509	-100.794495
T. Der. San Antonio de Las Alazanas	224.94	1	2	10063	3.1	39.3	5.6	6.3	2.5	35.9	2.0	4.4	0.9	42.4	5.6	52.0	0.072	0.503	25.345528	-100.794592
T. Der. San Antonio de Las Alazanas	224.94	3	1	12745	3.6	40.7	6.7	5.1	2.2	34.9	2.0	4.1	0.7	44.3	6.7	49.0	0.083	0.634	25.351173	-100.794337
T. Der. San Antonio de Las Alazanas	224.94	3	2	13168	3.4	40.4	6.5	5.0	2.5	35.0	1.9	4.5	0.8	43.8	6.5	49.7	0.066	0.634	25.352038	-100.794403
Los Lirios	228.30	3	1	12203	2.4	48.5	4.4	4.8	2.4	30.1	2.8	3.8	0.8	50.9	4.4	44.7	0.086	0.582	25.406940	-100.800651
Los Lirios	228.30	3	2	11910	2.5	49.1	4.2	4.7	2.5	30.0	2.6	3.6	0.8	51.6	4.2	44.2	0.112	0.582	25.406927	-100.800741
Ent. La Carbonera	235.60																			

21 CARR: Saltillo - Monterrey (Cuota)

CLAVE: 00087

RUTA: MEX-040D

AÑO: 2025

LUGAR	ESTACION				CLASIFICACION VEHICULAR EN PORCIENTO										COORDENADAS					
	KM	TE	SC	TDPA	M	A	B	C2	C3	T3S2	T3S3	T3S2R4	OTROS	A	B	C	K'	D	LATITUD	LONGITUD
Ojo Caliente	46.21	3	1	5306	7.9	45.3	4.8	6.0	2.7	20.2	3.2	9.0	0.9	53.2	4.8	42.0	0.070	0.512	25.617019	-100.906759

NUEVO LEÓN

21 CARR: Saltillo - Monterrey (Cuota)

CLAVE: 00087

RUTA: MEX-040D

AÑO: 2025

LUGAR	ESTACION				CLASIFICACION VEHICULAR EN PORCIENTO										COORDENADAS					
	KM	TE	SC	TDPA	M	A	B	C2	C3	T3S2	T3S3	T3S2R4	OTROS	A	B	C	K'	D	LATITUD	LONGITUD
Ojo Caliente	46.21	3	2	5600	7.5	44.8	4.8	5.8	2.6	20.9	3.4	9.3	0.9	52.3	4.8	42.9	0.068	0.512	25.617085	-100.906813
Lim. Edos. Term. Coah. Ppia. N. L.	61.08																			
T. Izq. Anillo Periférico de Monterrey (Cuota)	82.00	1	1	12152	3.2	59.7	5.3	6.1	2.1	17.1	2.0	3.5	1.0	62.9	5.3	31.8	0.074	0.596	25.697597	-100.597707
T. Izq. Anillo Periférico de Monterrey (Cuota)	82.00	1	2	12887	2.8	60.2	5.1	6.0	2.3	17.3	1.9	3.5	0.9	63.0	5.1	31.9	0.099	0.596	25.697682	-100.597703
T. Izq. Anillo Periférico de Monterrey (Cuota)	82.00	3	1	7198	1.8	88.3	2.3	4.4	1.4	0.9	0.4	0.2	0.3	90.1	2.3	7.6	0.107	0.521	25.683195	-100.524085
T. Izq. Anillo Periférico de Monterrey (Cuota)	82.00	3	2	6604	1.8	88.7	2.5	4.2	1.0	1.0	0.3	0.2	0.3	90.5	2.5	7.0	0.098	0.521	25.683279	-100.524064
Morones Prieto	96.10																			

22 CARR: Agualeguas - El Ébano

CLAVE: 19004

RUTA: NL-023

AÑO: 2025

LUGAR	ESTACION				CLASIFICACION VEHICULAR EN PORCIENTO										COORDENADAS					
	KM	TE	SC	TDPA	M	A	B	C2	C3	T3S2	T3S3	T3S2R4	OTROS	A	B	C	K'	D	LATITUD	LONGITUD
Agualeguas	0.00	3	0	332	0.8	79.9	1.2	16.0	1.5	0.1	0.1	0.4	0.0	80.7	1.2	18.1	0.105	0.600	26.300507	-99.553886
T. C. Monterrey - Nuevo Laredo	54.00	1	0	1391	3.2	70.0	2.3	7.2	3.0	11.2	0.9	1.8	0.4	73.2	2.3	24.5	0.083	0.552	26.330029	-100.108964

23 CARR: Apodaca - Villa Juárez

CLAVE: 00087

RUTA: NL

AÑO: 2025

LUGAR	ESTACION				CLASIFICACION VEHICULAR EN PORCIENTO										COORDENADAS					
	KM	TE	SC	TDPA	M	A	B	C2	C3	T3S2	T3S3	T3S2R4	OTROS	A	B	C	K'	D	LATITUD	LONGITUD
T. C. Monterrey - Cd. Mier	0.00	3	0	19378	2.6	77.4	1.9	14.3	1.2	1.0	0.5	0.8	0.3	80.0	1.9	18.1	0.074	0.605	25.771633	-100.178919
T. Der. Santa Mónica	5.00	1	1	18342	4.8	83.2	1.5	6.5	1.5	1.0	0.4	0.6	0.5	88.0	1.5	10.5	0.078	0.522	25.744048	-100.160458
T. Der. Santa Mónica	5.00	1	2	19804	5.0	82.7	1.6	6.3	1.8	1.2	0.3	0.8	0.3	87.7	1.6	10.7	0.091	0.522	25.744094	-100.160318
T. Der. Santa Mónica	5.00	3	1	16704	4.7	82.6	1.6	6.4	1.6	1.5	0.5	0.8	0.3	87.3	1.6	11.1	0.074	0.510	25.738805	-100.156526
T. Der. Santa Mónica	5.00	3	2	17860	4.8	82.8	1.4	6.5	1.7	1.3	0.4	0.6	0.5	87.6	1.4	11.0	0.069	0.510	25.738874	-100.156421
T. Izq. Aeropuerto	8.60	1	1	14466	5.8	78.8	2.4	8.2	1.7	1.6	0.5	0.6	0.4	84.6	2.4	13.0	0.081	0.592	25.726232	-100.143787
T. Izq. Aeropuerto	8.60	1	2	13182	5.5	79.8	2.2	8.3	1.5	1.7	0.3	0.4	0.3	85.3	2.2	12.5	0.107	0.592	25.726154	-100.143457
T. Izq. Aeropuerto	8.60	3	0	16967	6.9	73.9	3.4	8.9	2.1	1.8	0.5	1.9	0.6	80.8	3.4	15.8	0.062	0.562	25.707418	-100.134379
T. Der. Dulces Nombres	10.40	1	0	20180	4.3	76.4	2.7	11.5	1.8	1.7	0.3	0.9	0.4	80.7	2.7	16.6	0.071	0.531	25.701894	-100.131813
T. Der. Dulces Nombres	10.40	3	0	24156	4.8	75.6	4.3	9.6	1.4	2.6	0.7	0.8	0.2	80.4	4.3	15.3	0.070	0.559	25.687447	-100.120234
Villa Juárez	16.00	1	1	19142	8.0	75.8	4.6	5.8	2.0	1.8	0.7	1.1	0.2	83.8	4.6	11.6	0.083	0.551	25.657317	-100.079375
Villa Juárez	16.00	1	2	19024	7.9	76.0	4.3	6.0	2.2	1.7	0.6	1.0	0.3	83.9	4.3	11.8	0.072	0.551	25.657435	-100.079064

NUEVO LEÓN

24 CARR: Atongo - Lazarillos

CLAVE:

RUTA: NL

AÑO: 2025

LUGAR	ESTACION				CLASIFICACION VEHICULAR EN PORCIENTO										COORDENADAS					
	KM	TE	SC	TDPA	M	A	B	C2	C3	T3S2	T3S3	T3S2R4	OTROS	A	B	C	K'	D	LATITUD	LONGITUD
Atongo	0.00	3	0	727	4.1	86.0	0.3	6.3	2.1	0.6	0.4	0.2	0.0	90.1	0.3	9.6	0.103	0.520	25.346986	-100.001391
Lazarillos	7.78	1	0	2594	5.2	81.2	0.3	9.0	1.5	1.8	0.5	0.3	0.2	86.4	0.3	13.3	0.122	0.513	25.311356	-100.042641

25 CARR: Cadereyta de Jiménez - Doctor González

CLAVE: 19473

RUTA: NL

AÑO: 2025

LUGAR	ESTACION				CLASIFICACION VEHICULAR EN PORCIENTO										COORDENADAS					
	KM	TE	SC	TDPA	M	A	B	C2	C3	T3S2	T3S3	T3S2R4	OTROS	A	B	C	K'	D	LATITUD	LONGITUD
T. C. Monterrey - Reynosa	0.00	3	0	808	3.8	59.7	1.8	6.3	5.2	10.3	4.2	8.3	0.4	63.5	1.8	34.7	0.088	0.507	25.598377	-99.940860
X. C. Pesquería - Santa María Floreña	18.00	3	0	660	4.3	55.7	0.7	9.3	8.0	9.1	1.3	11.3	0.3	60.0	0.7	39.3	0.124	0.585	25.753979	-99.913835
Doctor González	30.00	1	0	432	7.6	78.5	0.4	9.7	1.3	1.1	0.9	0.3	0.2	86.1	0.4	13.5	0.113	0.510	25.856273	-99.936077

26 CARR: Cd. Benito Juárez - Villa de Santiago

CLAVE: 00087

RUTA: NL

AÑO: 2025

LUGAR	ESTACION				CLASIFICACION VEHICULAR EN PORCIENTO										COORDENADAS					
	KM	TE	SC	TDPA	M	A	B	C2	C3	T3S2	T3S3	T3S2R4	OTROS	A	B	C	K'	D	LATITUD	LONGITUD
Cd. Benito Juárez	0.00	3	1	15110	5.3	87.4	1.1	3.8	1.2	0.5	0.2	0.3	0.2	92.7	1.1	6.2	0.082	0.553	25.624825	-100.103142
Cd. Benito Juárez	0.00	3	2	13999	5.2	87.4	1.0	4.0	1.0	0.6	0.4	0.2	0.2	92.6	1.0	6.4	0.079	0.553	25.624777	-100.103047
Arboledas de San Roque	4.70	3	0	7294	0.8	83.4	0.9	9.4	1.6	2.5	0.7	0.6	0.1	84.2	0.9	14.9	0.113	0.670	25.601941	-100.116062
T. Izq. Cadereyta de Jiménez	23.00	3	0	6236	5.2	90.1	0.4	2.2	1.2	0.4	0.2	0.3	0.0	95.3	0.4	4.3	0.121	0.561	25.466638	-100.095983
T. C. Cd. Victoria - Monterrey	39.00	1	0	7215	3.4	85.3	0.6	7.0	1.1	1.4	0.6	0.5	0.1	88.7	0.6	10.7	0.111	0.531	25.454448	-100.159702

27 CARR: China - Méndez

CLAVE: 00191

RUTA: NL-TAM

AÑO: 2025

LUGAR	ESTACION				CLASIFICACION VEHICULAR EN PORCIENTO										COORDENADAS						
	KM	TE	SC	TDPA	M	A	B	C2	C3	T3S2	T3S3	T3S2R4	OTROS	A	B	C	K'	D	LATITUD	LONGITUD	
China	0.00	3	0	1171	1.5	91.9	0.9	3.6	0.9	0.8	0.3	0.1	0.0	93.4	0.9	5.7	0.114	0.579	25.697495	-99.221239	
Lim. Edos. Term. N. L. Ppia. Tamps.	75.00																				
Méndez	100.00																				

28 CARR: Doctor Arroyo - Mier y Noriega

CLAVE: 19088

RUTA: NL-088

AÑO: 2025

LUGAR	ESTACION				CLASIFICACION VEHICULAR EN PORCIENTO										COORDENADAS						
	KM	TE	SC	TDPA	M	A	B	C2	C3	T3S2	T3S3	T3S2R4	OTROS	A	B	C	K'	D	LATITUD	LONGITUD	
Doctor Arroyo	0.00	3	0	2414	10.7	75.3	0.6	10.6	0.9	1.6	0.3	0.0	0.0	86.0	0.6	13.4	0.087	0.555	23.654385	-100.188081	
Mier y Noriega	31.00																				

NUEVO LEÓN

29 CARR: Ent. Hacienda del Cielo - T. Der. Cadereyta

CLAVE:

RUTA: NL

AÑO: 2025

LUGAR	ESTACION				CLASIFICACION VEHICULAR EN PORCIENTO										COORDENADAS					
	KM	TE	SC	TDPA	M	A	B	C2	C3	T3S2	T3S3	T3S2R4	OTROS	A	B	C	K'	D	LATITUD	LONGITUD
Hacienda del Cielo	0.00	3	0	1950	4.1	78.8	1.3	8.8	2.6	2.5	1.3	0.4	0.2	82.9	1.3	15.8	0.131	0.580	25.522588	-100.012406
T. Der. Benito Juárez	11.50	1	0	2032	5.4	85.7	0.4	3.4	2.0	2.5	0.3	0.2	0.1	91.1	0.4	8.5	0.125	0.512	25.467244	-100.095832

30 CARR: Ent. Huisachito - Nuevo Laredo

CLAVE: 00074

RUTA: NL-001-TAM

AÑO: 2025

LUGAR	ESTACION				CLASIFICACION VEHICULAR EN PORCIENTO										COORDENADAS					
	KM	TE	SC	TDPA	M	A	B	C2	C3	T3S2	T3S3	T3S2R4	OTROS	A	B	C	K'	D	LATITUD	LONGITUD
T. C. Monterrey - Colombia	0.00	3	0	1757	0.4	76.6	3.7	8.8	3.6	3.5	2.6	0.5	0.3	77.0	3.7	19.3	0.092	0.648	27.354517	-99.949176
Lim. Edos. Term. N. L. Ppia. Tamps.	19.00																			
X. C. Libramiento de Nuevo Laredo	47.00	1	0	2349	0.6	75.2	1.2	13.5	2.8	3.9	1.9	0.8	0.1	75.8	1.2	23.0	0.080	0.628	27.473823	-99.650313
Nuevo Laredo	51.00	1	0	16072	2.1	88.2	1.2	3.5	1.8	2.1	0.4	0.4	0.3	90.3	1.2	8.5	0.088	0.631	27.485681	-99.583259

31 CARR: Gral. Bravo - Los Aldamas

CLAVE: 19030

RUTA: NL-030

AÑO: 2025

LUGAR	ESTACION				CLASIFICACION VEHICULAR EN PORCIENTO										COORDENADAS					
	KM	TE	SC	TDPA	M	A	B	C2	C3	T3S2	T3S3	T3S2R4	OTROS	A	B	C	K'	D	LATITUD	LONGITUD
Gral. Bravo	0.00	3	0	967	0.8	92.7	1.4	3.6	1.0	0.2	0.3	0.0	0.0	93.5	1.4	5.1	0.096	0.527	25.823645	-99.169834
Los Aldamas	31.00																			

32 CARR: Gral. Treviño - Villaldama

CLAVE: 19003

RUTA: NL-003

AÑO: 2025

LUGAR	ESTACION				CLASIFICACION VEHICULAR EN PORCIENTO										COORDENADAS					
	KM	TE	SC	TDPA	M	A	B	C2	C3	T3S2	T3S3	T3S2R4	OTROS	A	B	C	K'	D	LATITUD	LONGITUD
Gral. Treviño	0.00	3	0	895	2.8	81.0	0.6	12.0	1.5	0.7	0.4	0.9	0.1	83.8	0.6	15.6	0.083	0.622	26.237587	-99.490455
Agualeguas	13.00	3	0	852	4.4	83.7	0.3	9.1	1.6	0.2	0.3	0.4	0.0	88.1	0.3	11.6	0.081	0.522	26.321460	-99.537393
Paras	34.00	3	0	330	0.7	73.1	0.8	21.1	1.0	0.8	0.5	2.0	0.0	73.8	0.8	25.4	0.097	0.625	26.505077	-99.531669
El Álamo	62.00	1	0	587	2.1	75.3	1.8	18.0	1.0	0.8	0.3	0.6	0.1	77.4	1.8	20.8	0.101	0.610	26.490518	-99.771225
Villaldama	134.00	1	0	2163	1.9	85.6	0.6	9.4	0.8	1.5	0.2	0.0	0.0	87.5	0.6	11.9	0.080	0.503	26.504859	-100.412638

33 CARR: Hacienda Guadalupe - Higuera

CLAVE: 19006

RUTA: NL-006

AÑO: 2025

LUGAR	ESTACION				CLASIFICACION VEHICULAR EN PORCIENTO										COORDENADAS					
	KM	TE	SC	TDPA	M	A	B	C2	C3	T3S2	T3S3	T3S2R4	OTROS	A	B	C	K'	D	LATITUD	LONGITUD
Hacienda Guadalupe	0.00																			
Marin	3.00	1	1	4096	4.4	78.4	1.7	7.5	2.8	4.0	0.6	0.5	0.1	82.8	1.7	15.5	0.115	0.585	25.861673	-100.024332

NUEVO LEÓN

33 CARR: Hacienda Guadalupe - Higueras

CLAVE: 19006

RUTA: NL-006

AÑO: 2025

LUGAR	ESTACION				CLASIFICACION VEHICULAR EN PORCIENTO														COORDENADAS	
	KM	TE	SC	TDPA	M	A	B	C2	C3	T3S2	T3S3	T3S2R4	OTROS	A	B	C	K'	D	LATITUD	LONGITUD
Marín	3.00	1	2	3729	4.0	79.0	1.5	7.2	2.6	4.1	0.6	0.8	0.2	83.0	1.5	15.5	0.101	0.585	25.861711	-100.024506
Higueras	15.00																			

34 CARR: Libramiento de Linares

CLAVE: 19506

RUTA: NL

AÑO: 2025

LUGAR	ESTACION				CLASIFICACION VEHICULAR EN PORCIENTO														COORDENADAS	
	KM	TE	SC	TDPA	M	A	B	C2	C3	T3S2	T3S3	T3S2R4	OTROS	A	B	C	K'	D	LATITUD	LONGITUD
T. C. Cd. Victoria - Monterrey (1° Acceso)	0.00	3	0	17421	5.7	70.1	3.3	5.3	1.3	6.1	1.3	6.1	0.8	75.8	3.3	20.9	0.075	0.626	24.843520	-99.564082
T. C. Linares - Ent. San Roberto	2.00	3	0	16390	4.2	67.9	2.3	9.0	1.6	7.1	1.4	6.2	0.3	72.1	2.3	25.6	0.072	0.525	24.854104	-99.577582
T. C. Cd. Victoria - Monterrey (2° Acceso)	6.50																			

35 CARR: Libramiento de Montemorelos

CLAVE: 19492

RUTA: NL

AÑO: 2025

LUGAR	ESTACION				CLASIFICACION VEHICULAR EN PORCIENTO														COORDENADAS	
	KM	TE	SC	TDPA	M	A	B	C2	C3	T3S2	T3S3	T3S2R4	OTROS	A	B	C	K'	D	LATITUD	LONGITUD
T. C. Cd. Victoria - Monterrey (1° Acceso)	0.00	3	1	6378	2.6	69.5	4.1	6.0	1.6	7.0	1.8	6.5	0.9	72.1	4.1	23.8	0.119	0.712	25.128615	-99.812335
T. C. Cd. Victoria - Monterrey (1° Acceso)	0.00	3	2	6154	2.9	69.2	3.6	5.8	1.8	7.3	2.0	6.5	0.9	72.1	3.6	24.3	0.083	0.712	25.128419	-99.812421
T. C. Cd. Victoria - Monterrey (2° Acceso)	3.70																			

36 CARR: Libramiento de Sabinas Hidalgo

CLAVE: 19492

RUTA: NL

AÑO: 2025

LUGAR	ESTACION				CLASIFICACION VEHICULAR EN PORCIENTO														COORDENADAS	
	KM	TE	SC	TDPA	M	A	B	C2	C3	T3S2	T3S3	T3S2R4	OTROS	A	B	C	K'	D	LATITUD	LONGITUD
T. C. Monterrey - Nuevo Laredo (Sur)	0.00	3	0	3729	2.2	38.2	2.7	12.9	4.3	32.7	4.9	2.0	0.1	40.4	2.7	56.9	0.073	0.542	26.464525	-100.162145
T. C. Monterrey - Nuevo Laredo (Norte)	9.20	1	0	3396	2.5	46.7	2.4	11.3	2.5	31.2	1.8	1.4	0.2	49.2	2.4	48.4	0.074	0.530	26.525023	-100.151697

37 CARR: Libramiento Poniente de Cadereyta

CLAVE: 19085

RUTA: NL

AÑO: 2025

LUGAR	ESTACION				CLASIFICACION VEHICULAR EN PORCIENTO														COORDENADAS	
	KM	TE	SC	TDPA	M	A	B	C2	C3	T3S2	T3S3	T3S2R4	OTROS	A	B	C	K'	D	LATITUD	LONGITUD
T. C. Monterrey - Reynosa (Libre)	0.00	3	0	18619	4.0	84.3	0.7	3.4	2.6	2.4	0.5	1.7	0.4	88.3	0.7	11.0	0.066	0.529	25.589062	-100.028035
T. C. Cadereyta - Allende	6.00																			

NUEVO LEÓN

38 CARR: Los Guerra - Los Herreras

CLAVE: 19031

RUTA: TAM-NL

AÑO: 2025

LUGAR	ESTACION				CLASIFICACION VEHICULAR EN PORCIENTO													COORDENADAS			
	KM	TE	SC	TDPA	M	A	B	C2	C3	T3S2	T3S3	T3S2R4	OTROS	A	B	C	K'	D	LATITUD	LONGITUD	
Los Guerra	0.00																				
Lim. Edos. Term. Tamps. Ppia. N. L.	46.00																				
Los Herreras	73.00	1	0	463	4.0	87.2	0.5	6.8	1.2	0.2	0.1	0.0	0.0	91.2	0.5	8.3	0.106	0.571	25.902644	-99.393464	

39 CARR: Matehuala - La Poza

CLAVE: 00086

RUTA: SLP-029-NL-061

AÑO: 2025

LUGAR	ESTACION				CLASIFICACION VEHICULAR EN PORCIENTO													COORDENADAS			
	KM	TE	SC	TDPA	M	A	B	C2	C3	T3S2	T3S3	T3S2R4	OTROS	A	B	C	K'	D	LATITUD	LONGITUD	
Matehuala	0.00	3	0	3960	14.2	76.9	1.5	3.2	2.6	0.8	0.5	0.3	0.0	91.1	1.5	7.4	0.091	0.568	23.666355	-100.600811	
Lim. Edos. Term. S. L. P. Ppia. N. L.	19.70																				
Lim. Edos. Term. N. L. Ppia. S. L. P.	19.90																				
Lim. Edos. Term. S. L. P. Ppia. N. L.	21.53																				
Doctor Arroyo	49.00	1	0	3482	6.9	82.7	1.5	5.2	1.9	0.9	0.4	0.4	0.1	89.6	1.5	8.9	0.081	0.564	23.688826	-100.216937	
La Ascención	131.00	1	0	1008	9.3	78.2	3.4	5.6	1.1	2.1	0.2	0.1	0.0	87.5	3.4	9.1	0.086	0.529	24.321570	-99.905787	

40 CARR: Monclova - Estación Candela

CLAVE: 00501

RUTA: COA-030-NL

AÑO: 2025

LUGAR	ESTACION				CLASIFICACION VEHICULAR EN PORCIENTO													COORDENADAS			
	KM	TE	SC	TDPA	M	A	B	C2	C3	T3S2	T3S3	T3S2R4	OTROS	A	B	C	K'	D	LATITUD	LONGITUD	
T. C. Monclova - Piedras Negras	0.00																				
T. Izq. Libramiento de Monclova	5.10	1	1	3667	7.9	86.5	0.9	2.5	1.1	0.6	0.2	0.3	0.0	94.4	0.9	4.7	0.088	0.504	26.928301	-101.389052	
T. Izq. Libramiento de Monclova	5.10	1	2	3585	7.8	87.1	1.0	2.6	0.9	0.4	0.1	0.1	0.0	94.9	1.0	4.1	0.095	0.504	26.928360	-101.389144	
Lim. Edos. Term. Coah. Ppia. N. L.	118.00																				
T. C. Monterrey - Colombia	125.50	1	0	478	0.2	75.5	0.8	14.8	1.0	6.7	0.5	0.5	0.0	75.7	0.8	23.5	0.096	0.717	26.837824	-100.493909	

41 CARR: Monterrey - Colombia

CLAVE: 19001

RUTA: NL-001

AÑO: 2025

LUGAR	ESTACION				CLASIFICACION VEHICULAR EN PORCIENTO													COORDENADAS		
	KM	TE	SC	TDPA	M	A	B	C2	C3	T3S2	T3S3	T3S2R4	OTROS	A	B	C	K'	D	LATITUD	LONGITUD
T. C. Monterrey - Nuevo Laredo	0.00	3	1	21070	3.0	82.4	1.7	6.2	2.4	2.1	0.9	0.8	0.5	85.4	1.7	12.9	0.073	0.525	25.778373	-100.291952
T. C. Monterrey - Nuevo Laredo	0.00	3	2	19868	3.0	82.4	1.7	6.2	2.4	2.1	0.9	0.8	0.5	85.4	1.7	12.9	0.070	0.525	25.778651	-100.292119
X. C. Libramiento Noroeste de Monterrey	7.30	3	1	17155	2.9	69.9	2.1	9.2	5.8	7.0	1.5	1.2	0.4	72.8	2.1	25.1	0.128	0.716	25.834987	-100.295380
X. C. Libramiento Noroeste de Monterrey	7.30	3	2	15734	2.9	70.2	2.1	9.0	5.8	6.8	1.4	1.4	0.4	73.1	2.1	24.8	0.089	0.716	25.835002	-100.295475
T. Izq. Salinas Victoria (1º Acceso)	20.50	3	0	9663	1.4	74.1	2.7	8.3	2.3	4.3	3.4	2.7	0.8	75.5	2.7	21.8	0.085	0.510	25.966782	-100.276935
Villa Aldama	86.50	3	0	2506	1.3	69.7	1.5	16.3	2.0	3.0	3.3	2.3	0.6	71.0	1.5	27.5	0.101	0.748	26.511118	-100.432156

NUEVO LEÓN

41 CARR: Monterrey - Colombia

CLAVE: 19001

RUTA: NL-001

AÑO: 2025

LUGAR	ESTACION				CLASIFICACION VEHICULAR EN PORCIENTO													COORDENADAS		
	KM	TE	SC	TDPA	M	A	B	C2	C3	T3S2	T3S3	T3S2R4	OTROS	A	B	C	K'	D	LATITUD	LONGITUD
T. Izq. Bustamante	92.25	3	0	1429	1.3	70.3	1.2	15.4	2.2	2.1	3.4	3.4	0.7	71.6	1.2	27.2	0.093	0.579	26.547184	-100.459128
T. Izq. Candela	124.04	1	0	1347	0.6	66.4	1.4	15.7	2.3	3.8	4.8	4.4	0.6	67.0	1.4	31.6	0.098	0.545	26.836795	-100.492924
Lampazos de Naranjo	164.00	1	0	1959	0.9	67.9	1.3	15.4	2.3	4.3	4.4	3.1	0.4	68.8	1.3	29.9	0.083	0.528	27.004239	-100.509866
Anáhuac	195.00	1	0	2217	0.5	67.1	2.2	19.7	1.0	4.8	2.5	1.8	0.4	67.6	2.2	30.2	0.094	0.688	27.222227	-100.157755
Huizache	212.70	3	0	2621	0.7	66.6	1.8	17.4	2.4	4.6	3.3	2.9	0.3	67.3	1.8	30.9	0.093	0.654	27.349833	-99.955391
Colombia	263.00	1	1	874	1.2	43.0	0.6	14.7	6.9	28.8	2.7	1.5	0.6	44.2	0.6	55.2	0.126	0.703	27.688498	-99.781322
Colombia	263.00	1	2	753	1.2	43.8	0.7	15.2	7.0	28.2	2.4	1.2	0.3	45.0	0.7	54.3	0.114	0.703	27.688536	-99.781355

42 CARR: Palo Alto - Vallecillos

CLAVE: 19036

RUTA: NL

AÑO: 2025

LUGAR	ESTACION				CLASIFICACION VEHICULAR EN PORCIENTO													COORDENADAS		
	KM	TE	SC	TDPA	M	A	B	C2	C3	T3S2	T3S3	T3S2R4	OTROS	A	B	C	K'	D	LATITUD	LONGITUD
T. C. Gral. Treviño - Villa Aldama	0.00	3	0	233	1.7	80.0	0.5	12.7	2.3	1.0	0.0	1.8	0.0	81.7	0.5	17.8	0.094	0.636	26.497185	-99.760993
Vallecillos	43.00	1	0	218	6.1	68.0	1.4	20.6	1.7	2.2	0.0	0.0	0.0	74.1	1.4	24.5	0.115	0.520	26.658669	-99.982062

43 CARR: Peña Blanca - Cd. Camargo

CLAVE: 00102

RUTA: NL-TAM

AÑO: 2025

LUGAR	ESTACION				CLASIFICACION VEHICULAR EN PORCIENTO													COORDENADAS		
	KM	TE	SC	TDPA	M	A	B	C2	C3	T3S2	T3S3	T3S2R4	OTROS	A	B	C	K'	D	LATITUD	LONGITUD
T. C. Monterrey - Reynosa	0.00	3	0	381	0.9	79.3	0.7	12.3	1.8	1.4	3.1	0.3	0.2	80.2	0.7	19.1	0.113	0.721	25.836625	-99.008477
Lim. Edos. Term. N. L. Ppia. Tamps.	30.00																			
Cd. Camargo	65.00	1	0	2964	3.2	83.7	1.1	2.0	3.1	4.5	1.6	0.6	0.2	86.9	1.1	12.0	0.066	0.564	26.304236	-98.834752

44 CARR: Ramal a 18 de Marzo

CLAVE: 19475

RUTA: NL

AÑO: 2025

LUGAR	ESTACION				CLASIFICACION VEHICULAR EN PORCIENTO													COORDENADAS		
	KM	TE	SC	TDPA	M	A	B	C2	C3	T3S2	T3S3	T3S2R4	OTROS	A	B	C	K'	D	LATITUD	LONGITUD
T. C. Linares - Ent. San Roberto	0.00	3	0	2834	3.5	79.6	1.3	11.5	1.3	2.3	0.5	0.0	0.0	83.1	1.3	15.6	0.092	0.504	24.777353	-100.041688
18 de Marzo	14.00																			

45 CARR: Ramal a Cerralvo

CLAVE: 19013

RUTA: NL-013

AÑO: 2025

LUGAR	ESTACION				CLASIFICACION VEHICULAR EN PORCIENTO													COORDENADAS		
	KM	TE	SC	TDPA	M	A	B	C2	C3	T3S2	T3S3	T3S2R4	OTROS	A	B	C	K'	D	LATITUD	LONGITUD
T. C. Monterrey - Reynosa	0.00	3	0	525	1.6	73.6	1.9	13.5	2.6	2.6	1.2	2.6	0.4	75.2	1.9	22.9	0.124	0.508	25.732037	-99.371560

NUEVO LEÓN

45 CARR: Ramal a Cerralvo

CLAVE: 19013

RUTA: NL-013

AÑO: 2025

LUGAR	ESTACION				CLASIFICACION VEHICULAR EN PORCIENTO													COORDENADAS		
	KM	TE	SC	TDPA	M	A	B	C2	C3	T3S2	T3S3	T3S2R4	OTROS	A	B	C	K'	D	LATITUD	LONGITUD
Los Herrera	21.00	3	0	449	2.2	84.5	1.4	6.5	2.2	1.0	0.7	1.4	0.1	86.7	1.4	11.9	0.114	0.647	25.922333	-99.422863
Cerralvo	58.00	1	0	2329	2.6	90.9	0.2	3.1	1.4	0.4	0.2	1.1	0.1	93.5	0.2	6.3	0.088	0.576	26.081297	-99.605560

46 CARR: Ramal a Marín

CLAVE: 19007

RUTA: NL

AÑO: 2025

LUGAR	ESTACION				CLASIFICACION VEHICULAR EN PORCIENTO													COORDENADAS		
	KM	TE	SC	TDPA	M	A	B	C2	C3	T3S2	T3S3	T3S2R4	OTROS	A	B	C	K'	D	LATITUD	LONGITUD
T. C. Monterrey - Nuevo Laredo	0.00	3	0	38717	3.1	80.7	4.6	8.0	1.3	1.1	0.3	0.7	0.2	83.8	4.6	11.6	0.058	0.544	25.916378	-100.194797
Marín	10.00																			

47 CARR: Salinas Victoria - Ciénega de Flores

CLAVE: 19007

RUTA: NL

AÑO: 2025

LUGAR	ESTACION				CLASIFICACION VEHICULAR EN PORCIENTO													COORDENADAS		
	KM	TE	SC	TDPA	M	A	B	C2	C3	T3S2	T3S3	T3S2R4	OTROS	A	B	C	K'	D	LATITUD	LONGITUD
Salinas Victoria	0.00	3	0	10818	3.6	63.3	2.8	7.5	5.0	12.4	2.5	2.3	0.6	66.9	2.8	30.3	0.113	0.694	25.951125	-100.268813
T. C. Monterrey - Nuevo Laredo (Cuota)	6.00	1	0	13246	3.6	61.4	2.7	7.7	5.7	13.8	2.1	2.4	0.6	65.0	2.7	32.3	0.098	0.533	25.945198	-100.234466
Ciénega de Flores	10.00																			

48 CARR: Santa Rosa - Mezquital

CLAVE: 00087

RUTA: NL

AÑO: 2025

LUGAR	ESTACION				CLASIFICACION VEHICULAR EN PORCIENTO													COORDENADAS		
	KM	TE	SC	TDPA	M	A	B	C2	C3	T3S2	T3S3	T3S2R4	OTROS	A	B	C	K'	D	LATITUD	LONGITUD
X. C. Libramiento Noroeste de Monterrey	0.00	3	1	14814	4.4	74.2	1.5	4.9	2.5	8.3	2.5	1.2	0.5	78.6	1.5	19.9	0.078	0.538	25.814135	-100.222562
X. C. Libramiento Noroeste de Monterrey	0.00	3	2	14409	4.4	74.3	1.3	4.8	2.5	8.2	2.7	1.2	0.6	78.7	1.3	20.0	0.076	0.538	25.814061	-100.222449
Mezquital	9.00																			

49 CARR: Santa Rosa - Salinas Victoria

CLAVE: 19037

RUTA: NL

AÑO: 2025

LUGAR	ESTACION				CLASIFICACION VEHICULAR EN PORCIENTO													COORDENADAS		
	KM	TE	SC	TDPA	M	A	B	C2	C3	T3S2	T3S3	T3S2R4	OTROS	A	B	C	K'	D	LATITUD	LONGITUD
Ent. Salinas Victoria	0.00	3	1	14140	6.0	74.7	1.9	5.8	2.9	4.9	0.8	2.2	0.8	80.7	1.9	17.4	0.074	0.509	25.860837	-100.246268
Ent. Salinas Victoria	0.00	3	2	15646	6.4	73.6	2.0	6.0	3.0	4.7	1.1	2.5	0.7	80.0	2.0	18.0	0.070	0.509	25.860900	-100.246437
Salinas Victoria	13.85	1	1	5821	5.1	84.5	1.2	7.8	0.6	0.4	0.2	0.1	0.1	89.6	1.2	9.2	0.110	0.553	25.950719	-100.288308
Salinas Victoria	13.85	1	2	5720	5.1	84.4	1.0	8.0	0.7	0.3	0.2	0.2	0.1	89.5	1.0	9.5	0.090	0.553	25.950694	-100.288376

NUEVO LEÓN

50 CARR: Aeropuerto de Monterrey (Cuota)

CLAVE:

RUTA: NL-D

AÑO: 2025

LUGAR	ESTACION				CLASIFICACION VEHICULAR EN PORCIENTO													COORDENADAS		
	KM	TE	SC	TDPA	M	A	B	C2	C3	T3S2	T3S3	T3S2R4	OTROS	A	B	C	K'	D	LATITUD	LONGITUD
T. C. Monterrey - Cadereyta (Cuota)	0.00																			
T. C. Apodaca - Villa Juarez	3.10	3	1	15624	4.2	82.5	2.7	4.2	1.3	2.5	1.2	1.0	0.4	86.7	2.7	10.6	0.105	0.684	25.721848	-100.134701
T. C. Apodaca - Villa Juarez	3.10	3	2	15917	4.3	81.7	2.6	4.4	1.4	2.8	1.3	1.2	0.3	86.0	2.6	11.4	0.109	0.684	25.720656	-100.135295
Aeropuerto Mariano Escobedo	10.50																			

51 CARR: Anillo Periférico de Monterrey (Cuota)

CLAVE: 19004

RUTA: NL-D

AÑO: 2025

LUGAR	ESTACION				CLASIFICACION VEHICULAR EN PORCIENTO													COORDENADAS		
	KM	TE	SC	TDPA	M	A	B	C2	C3	T3S2	T3S3	T3S2R4	OTROS	A	B	C	K'	D	LATITUD	LONGITUD
T. C. Saltillo - Monterrey	0.00	3	1	8180	1.5	53.6	3.0	6.9	3.3	22.8	2.1	5.9	0.9	55.1	3.0	41.9	0.100	0.672	25.712084	-100.555990
T. C. Saltillo - Monterrey	0.00	3	2	7936	1.5	52.4	3.2	6.7	3.7	23.7	2.2	5.8	0.8	53.9	3.2	42.9	0.083	0.672	25.712039	-100.556445
X. C. Monterrey - Nuevo Laredo (Libre)	37.70	1	1	10072	2.2	54.1	4.3	5.6	4.8	20.7	2.6	4.7	1.0	56.3	4.3	39.4	0.088	0.515	25.840555	-100.258219
X. C. Monterrey - Nuevo Laredo (Libre)	37.70	1	2	9585	2.2	54.3	4.6	5.4	5.0	20.0	2.7	4.9	0.9	56.5	4.6	38.9	0.085	0.515	25.840767	-100.258500
X. C. Monterrey - Mier	49.30	1	1	12727	3.1	50.6	3.6	6.0	4.8	22.2	3.9	5.1	0.7	53.7	3.6	42.7	0.075	0.551	25.800737	-100.178526
X. C. Monterrey - Mier	49.30	1	2	12613	3.1	50.2	3.7	6.1	5.0	22.4	4.0	4.9	0.6	53.3	3.7	43.0	0.086	0.551	25.800446	-100.177971
T. C. Monterrey - Cadereyta	66.80																			

52 CARR: Monterrey - Cadereyta (Cuota)

CLAVE: 19281

RUTA: NL-D

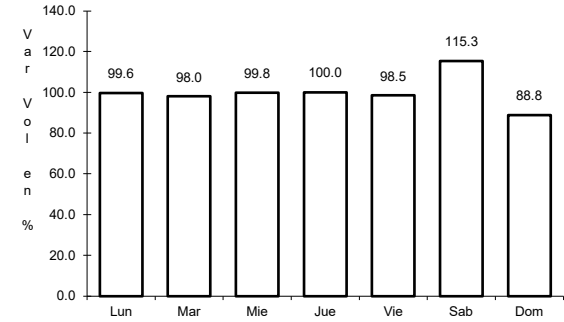
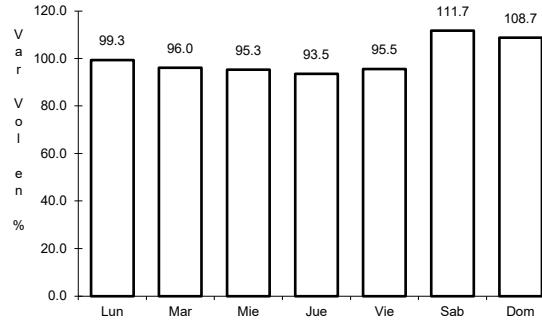
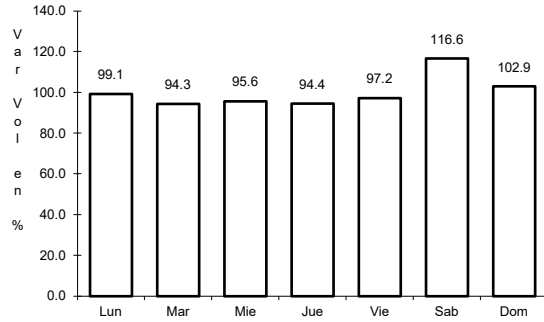
AÑO: 2025

LUGAR	ESTACION				CLASIFICACION VEHICULAR EN PORCIENTO													COORDENADAS		
	KM	TE	SC	TDPA	M	A	B	C2	C3	T3S2	T3S3	T3S2R4	OTROS	A	B	C	K'	D	LATITUD	LONGITUD
T. Av. Bonifacio Salinas	3.05																			
T. Izq. Apodaca (Aeropuerto)	12.50	1	1	16675	1.4	87.2	1.3	6.0	1.2	1.7	0.4	0.5	0.3	88.6	1.3	10.1	0.079	0.566	25.692258	-100.161684
T. Izq. Apodaca (Aeropuerto)	12.50	1	2	15509	1.4	87.1	1.3	6.2	0.8	1.6	0.5	0.7	0.4	88.5	1.3	10.2	0.092	0.566	25.692486	-100.161591
T. C. Anillo Periférico de Monterrey (Cuota)	21.80	3	1	6656	2.4	71.3	3.6	3.5	2.6	9.7	2.1	4.0	0.8	73.7	3.6	22.7	0.084	0.575	25.638904	-100.042695
T. C. Anillo Periférico de Monterrey (Cuota)	21.80	3	2	6431	2.1	71.3	3.6	3.4	2.3	9.9	2.3	4.3	0.8	73.4	3.6	23.0	0.100	0.575	25.639108	-100.042530
T. Der. Cadereyta	33.10																			

1 CARR: Cadereyta de Jiménez - Allende

CLAVE: 19009

ruta: MEX-009



Km: 0.00 Tipo: 3 Sent: 1

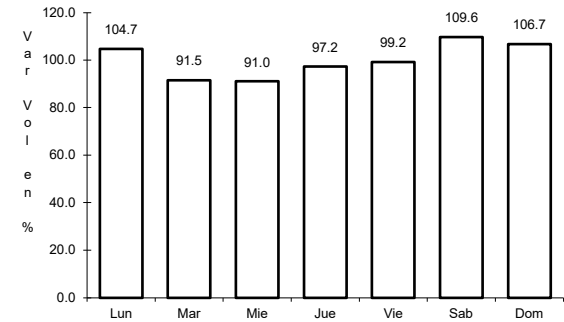
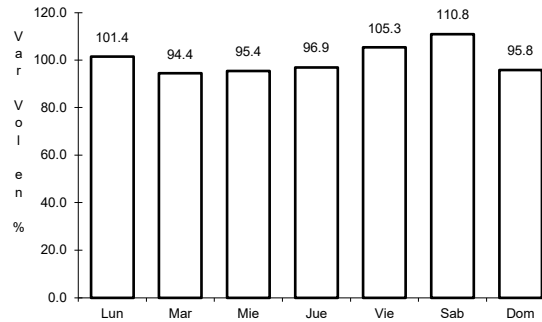
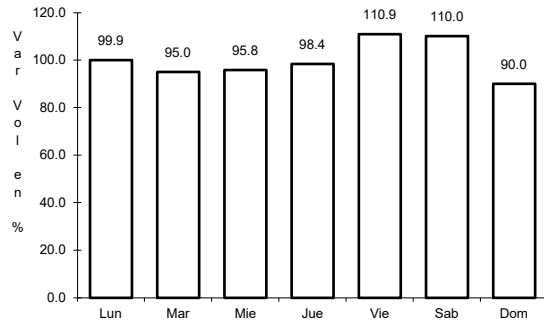
Km: 0.00 Tipo: 3 Sent: 2

Km: 26.80 Tipo: 1 Sent: 0

2 CARR: Ciudad Victoria - Monterrey

CLAVE: 00462

ruta: MEX-085



Km: 0.00 Tipo: 3 Sent: 1

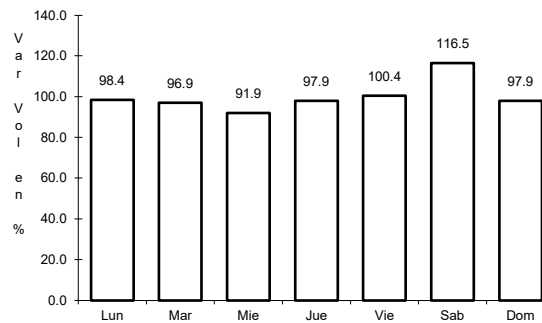
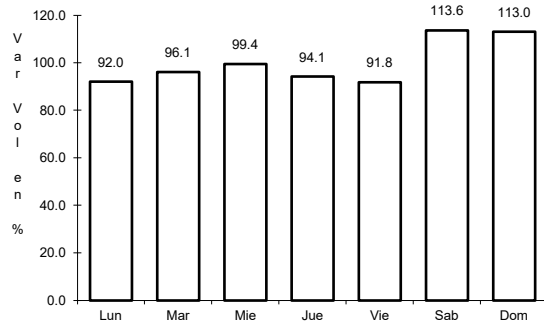
Km: 0.00 Tipo: 3 Sent: 2

Km: 154.00 Tipo: 1 Sent: 0

3 CARR: La Unión - El Encadenado

CLAVE:

ruta: MEX



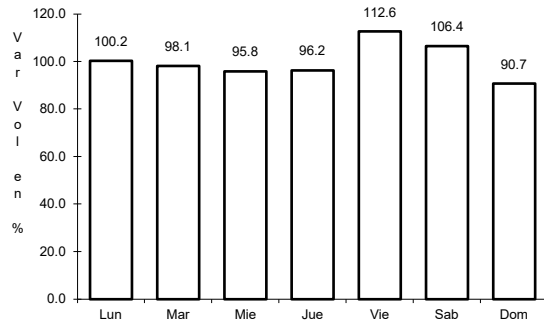
Km: 0.00 Tipo: 3 Sent: 0

Km: 10.00 Tipo: 1 Sent: 0

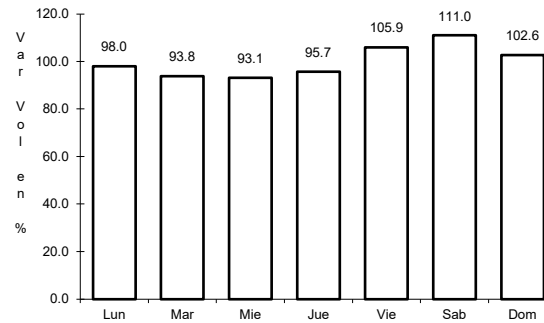
4 CARR: Libramiento de China

CLAVE:

ruta: MEX-040



Km: 0.00 Tipo: 3 Sent: 0

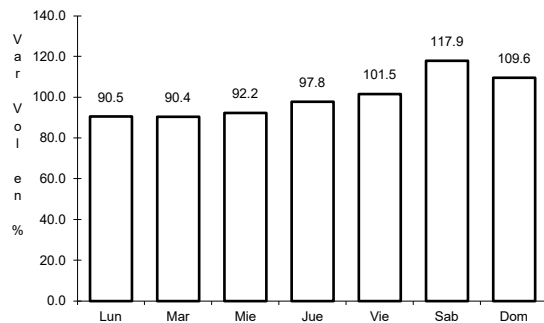


Km: 2.41 Tipo: 1 Sent: 0

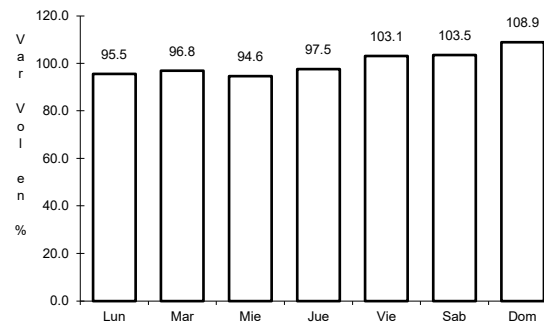
5 CARR: Libramiento de Dr. González

CLAVE: 00127

ruta: MEX-054



Km: 44.00 Tipo: 3 Sent: 0

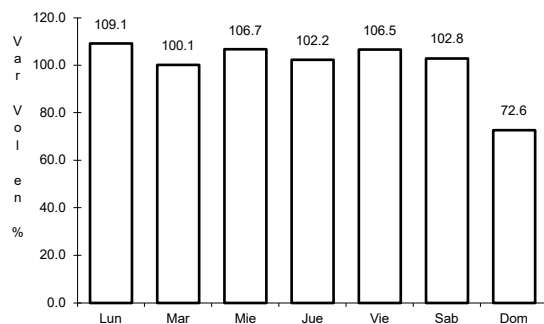


Km: 54.50 Tipo: 1 Sent: 0

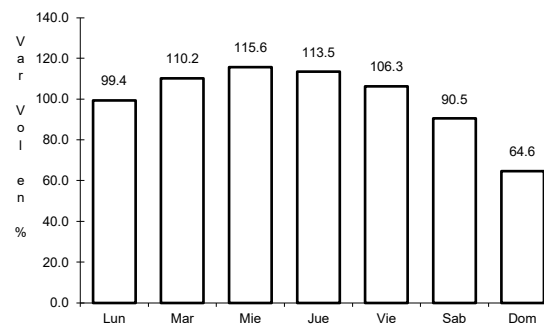
6 CARR: Libramiento Noroeste de Monterrey

CLAVE: 19085

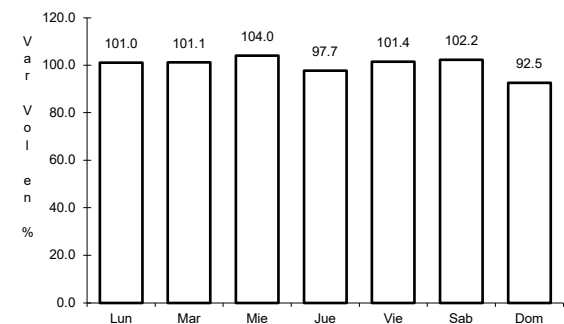
ruta: MEX-040



Km: 0.00 Tipo: 3 Sent: 1



Km: 0.00 Tipo: 3 Sent: 2

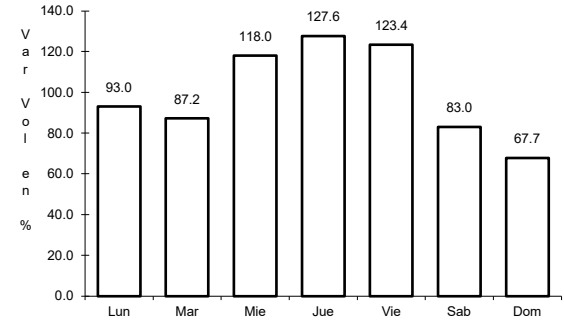
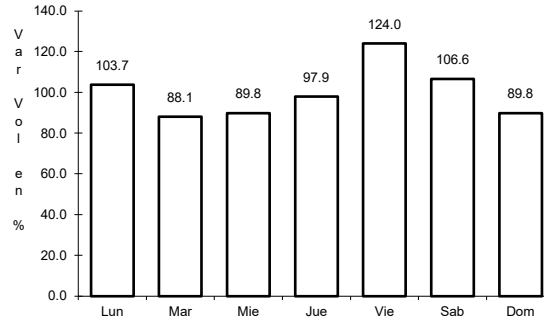
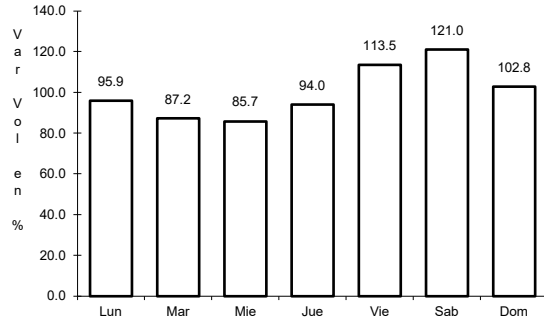


Km: 48.00 Tipo: 1 Sent: 1

7 CARR: Linares - Ent. San Roberto

CLAVE: 19031

ruta: MEX-058



Km: 0.00 Tipo: 3 Sent: 0

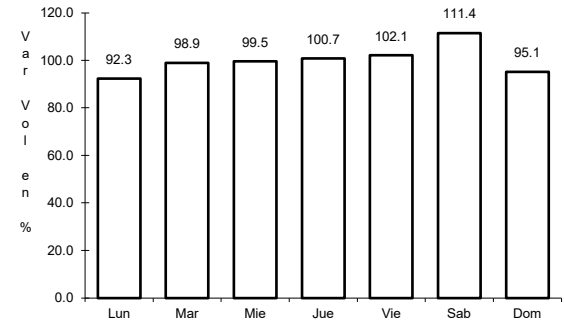
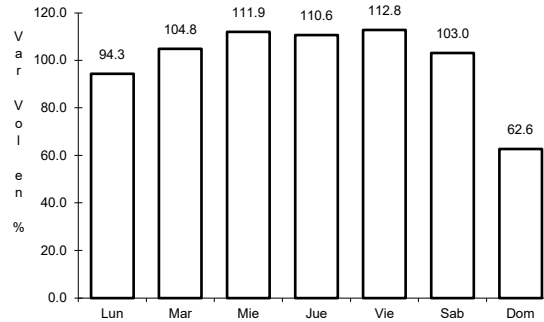
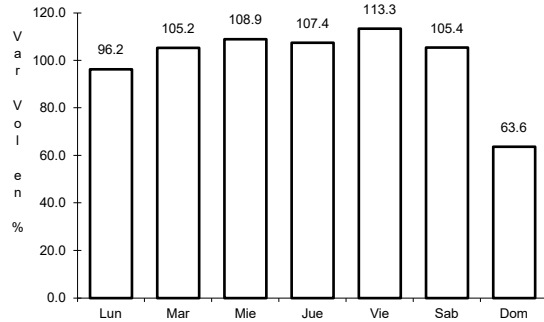
Km: 66.00 Tipo: 1 Sent: 0

Km: 98.00 Tipo: 1 Sent: 0

8 CARR: Matehuala - Ent. Puerto México

CLAVE: 00405

ruta: MEX-057



Km: 0.00 Tipo: 3 Sent: 1

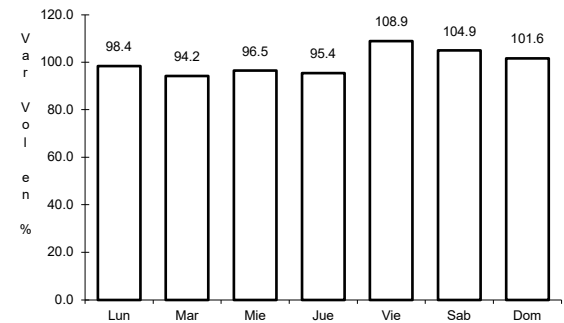
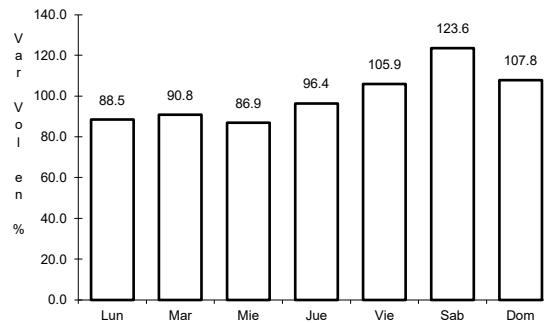
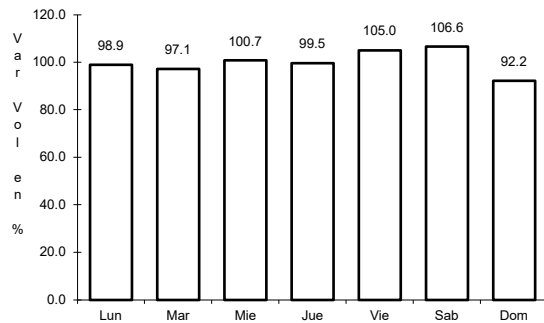
Km: 0.00 Tipo: 3 Sent: 2

Km: 177.18 Tipo: 1 Sent: 1

9 CARR: Montemorelos - China

CLAVE: 19280

ruta: MEX-035



Km: 0.00 Tipo: 3 Sent: 0

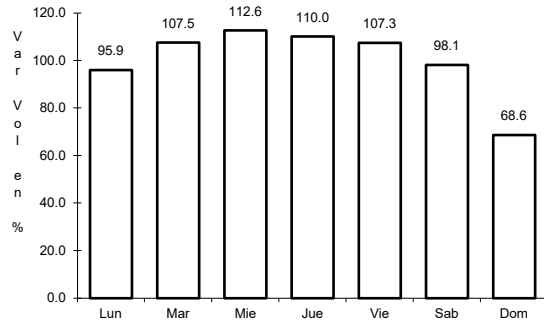
Km: 23.10 Tipo: 3 Sent: 0

Km: 93.00 Tipo: 1 Sent: 0

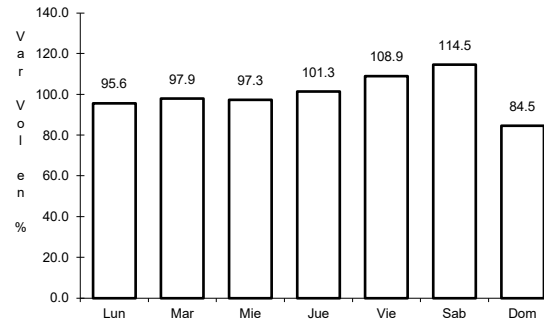
10 CARR: Monterrey - Castaños

CLAVE: 00128

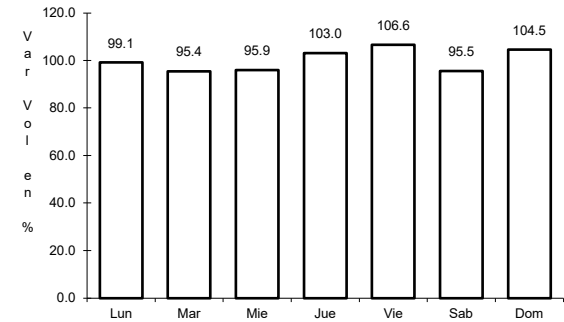
ruta: MEX-053



Km: 0.00 Tipo: 3 Sent: 0



Km: 155.90 Tipo: 1 Sent: 1

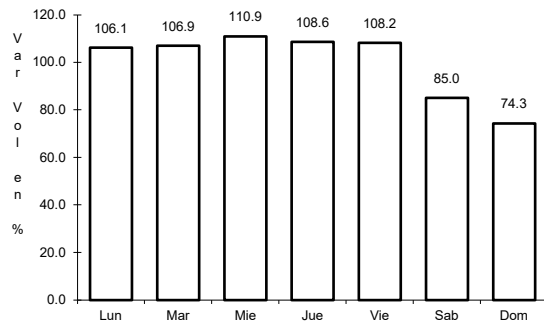


Km: 155.90 Tipo: 1 Sent: 2

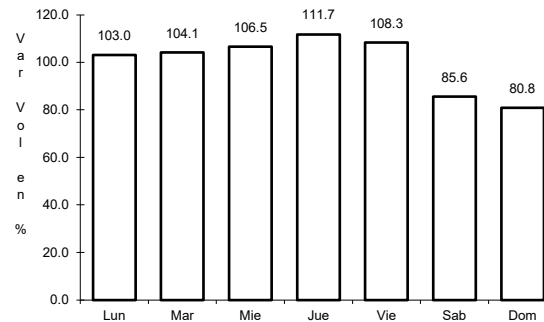
11 CARR: Monterrey - Mier

CLAVE: 00127

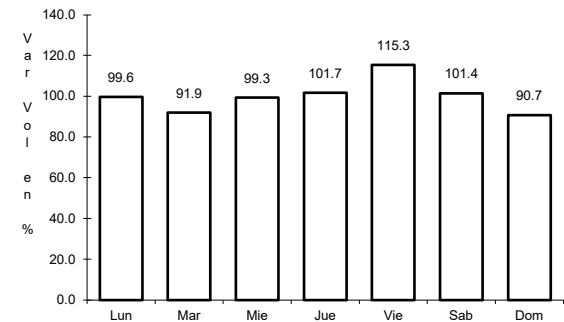
ruta: MEX-054



Km: 19.12 Tipo: 1 Sent: 1



Km: 19.12 Tipo: 1 Sent: 2

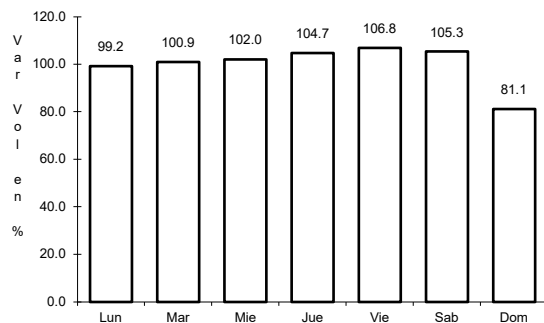


Km: 156.21 Tipo: 1 Sent: 0

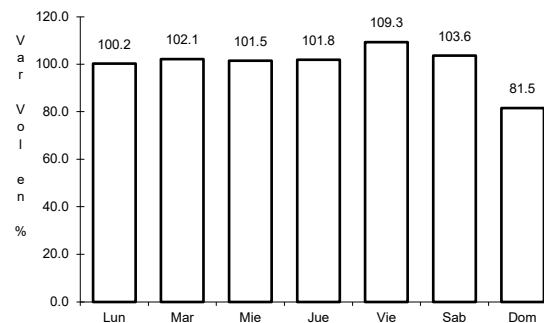
12 CARR: Monterrey - Nuevo Laredo (Libre)

CLAVE: 00463

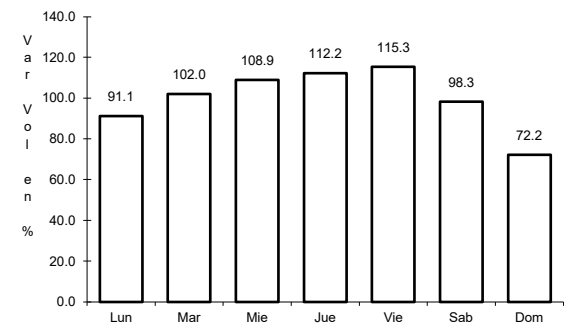
ruta: MEX-085



Km: 12.10 Tipo: 3 Sent: 1



Km: 12.10 Tipo: 3 Sent: 2

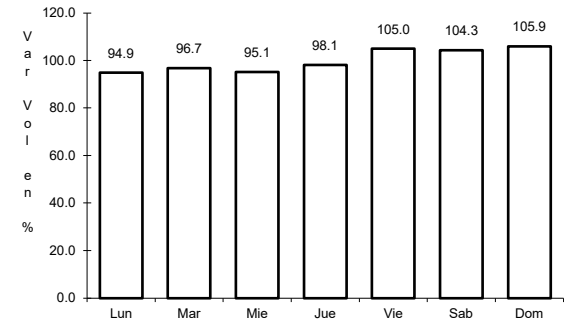
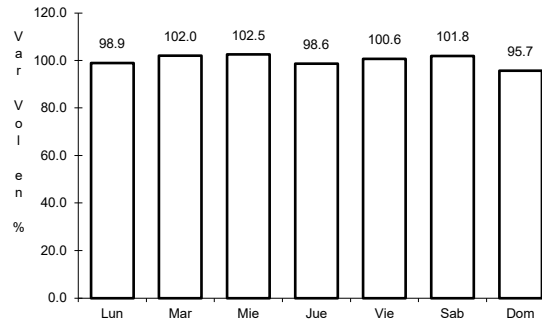
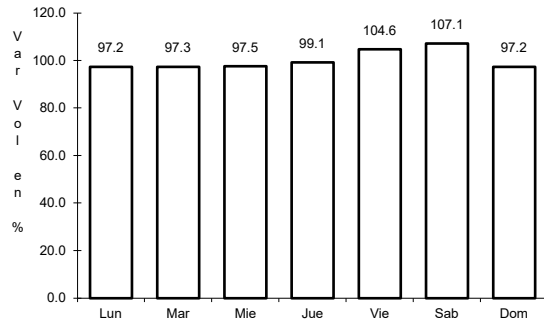


Km: 124.40 Tipo: 3 Sent: 0

13 CARR: Monterrey - Reynosa (Libre)

CLAVE: 00088

RUTA: MEX-040



Km: 19.10 Tipo: 1 Sent: 1

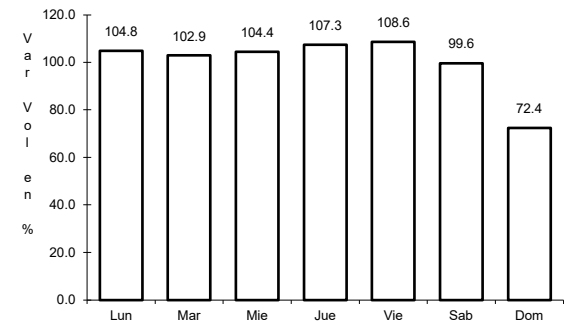
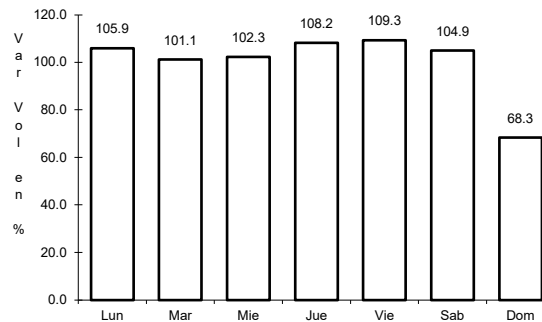
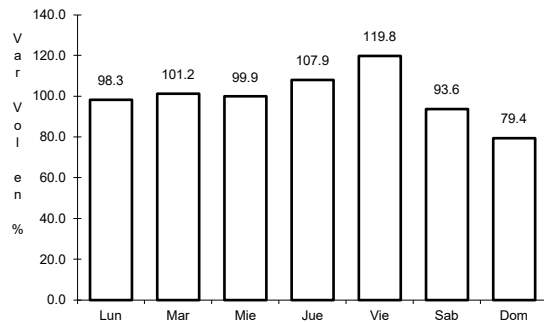
Km: 19.10 Tipo: 1 Sent: 2

Km: 125.00 Tipo: 1 Sent: 0

14 CARR: Nuevo Laredo - Piedras Negras

CLAVE: 00503

RUTA: MEX-002



Km: 36.18 Tipo: 1 Sent: 0

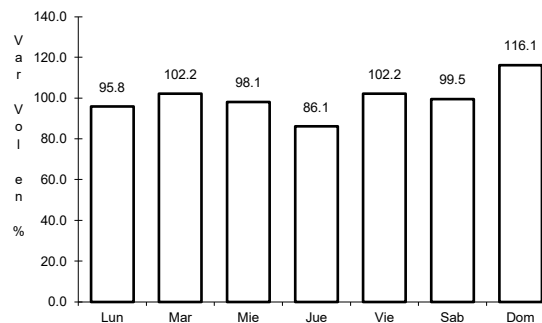
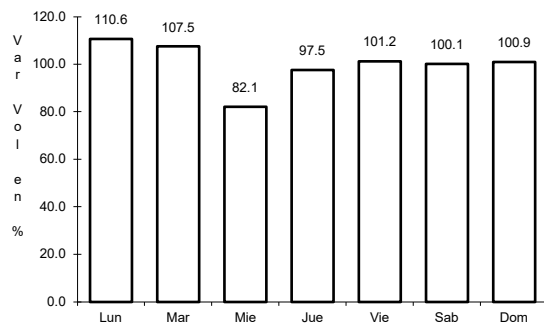
Km: 169.30 Tipo: 1 Sent: 1

Km: 169.30 Tipo: 1 Sent: 2

15 CARR: Paras - Nueva Ciudad Guerrero

CLAVE: 00476

RUTA: MEX-030



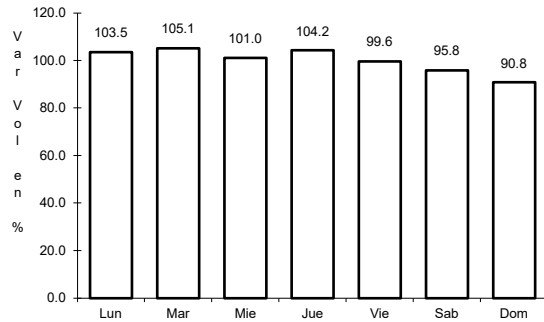
Km: 0.00 Tipo: 3 Sent: 0

Km: 32.00 Tipo: 1 Sent: 0

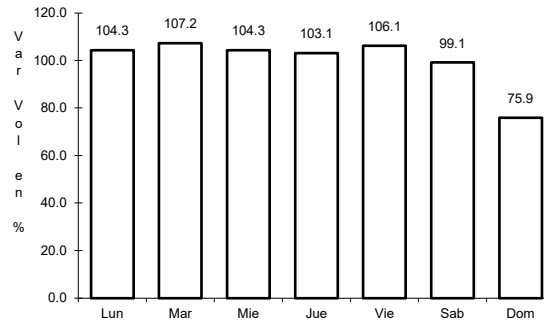
16 CARR: Ramal a Aeropuerto Mariano Escobedo

CLAVE: 19510

ruta: MEX-054



Km: 0.00 Tipo: 3 Sent: 1

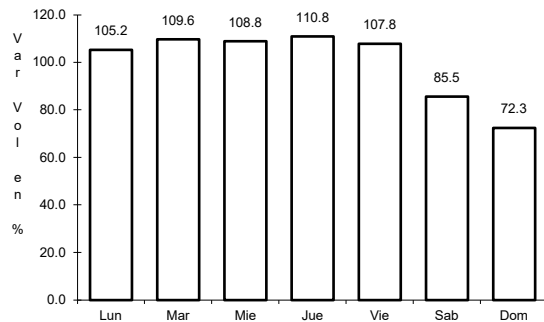


Km: 0.00 Tipo: 3 Sent: 2

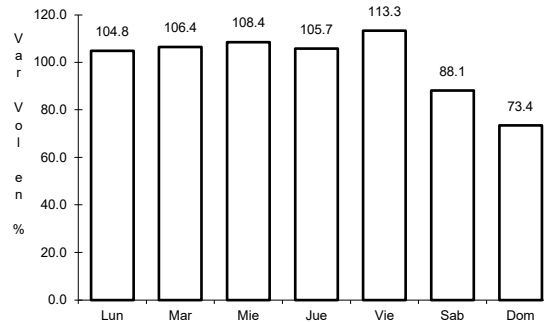
17 CARR: Saltillo - Monterrey

CLAVE: 00087

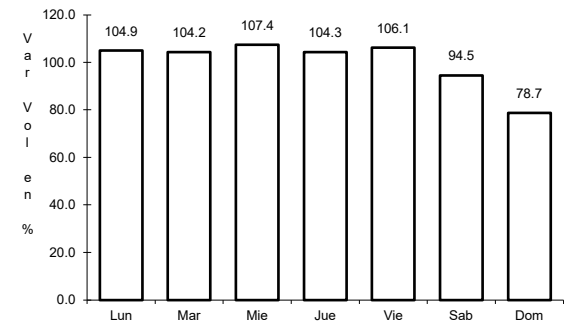
ruta: MEX-040



Km: 4.25 Tipo: 3 Sent: 1



Km: 4.25 Tipo: 3 Sent: 2

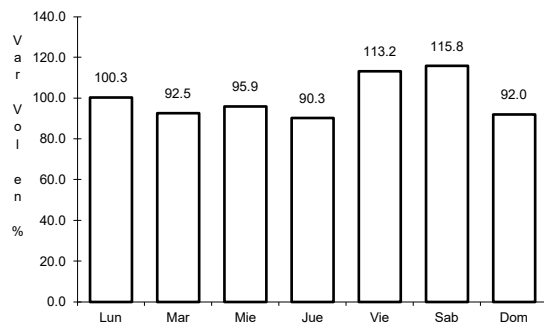


Km: 79.20 Tipo: 1 Sent: 1

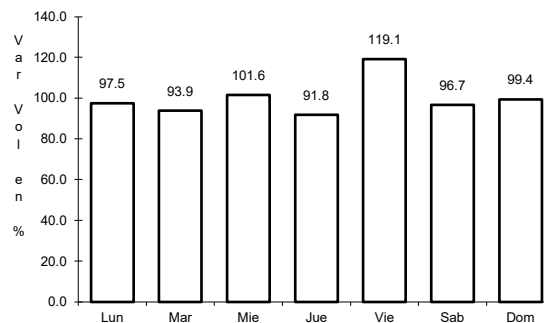
18 CARR: Cadereyta - Reynosa (Cuota)

CLAVE: 19002

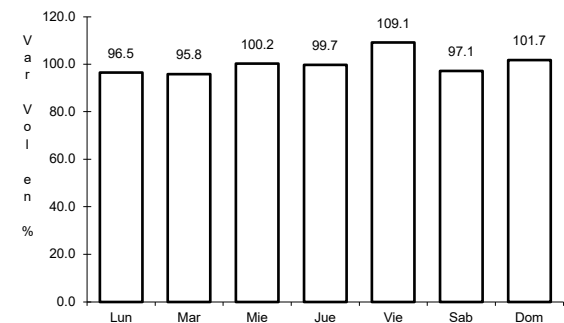
ruta: MEX-040D



Km: 37.00 Tipo: 3 Sent: 1



Km: 37.00 Tipo: 3 Sent: 2

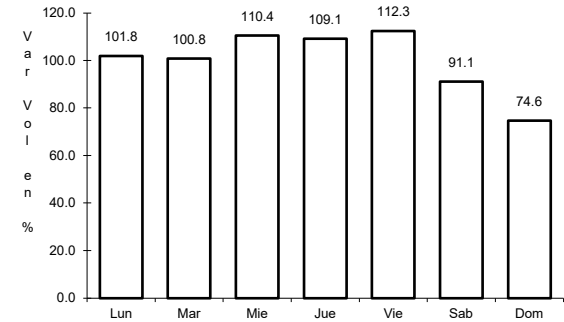
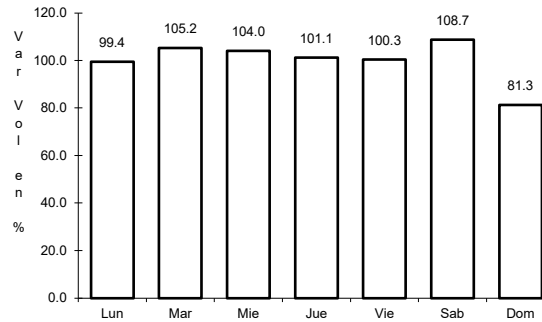
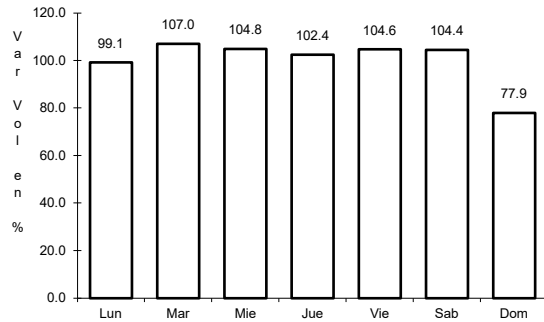


Km: 166.90 Tipo: 1 Sent: 1

19 CARR: Monterrey - Nuevo Laredo (Cuota)

CLAVE: 19086

ruta: MEX-085D



Km: 24.00 Tipo: 3 Sent: 1

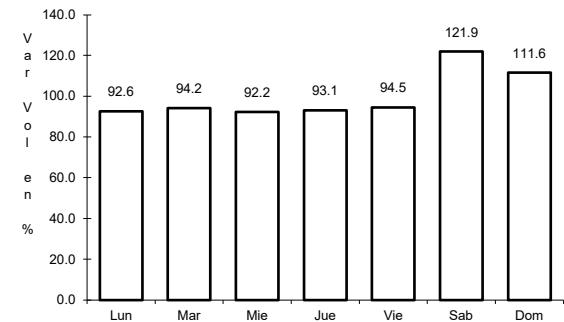
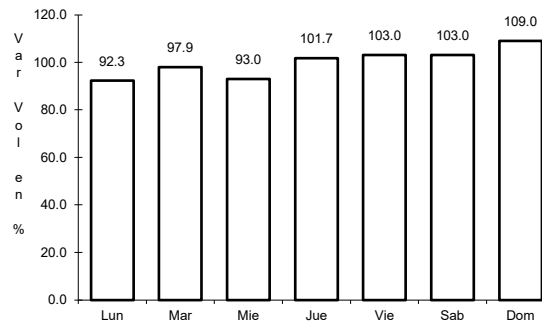
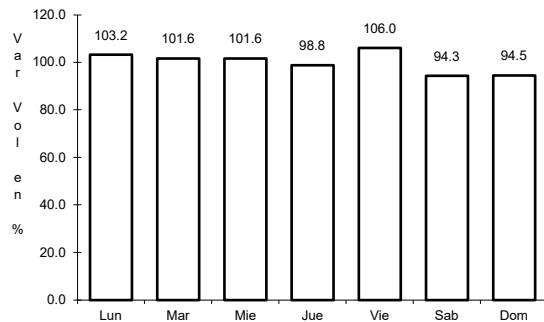
Km: 24.00 Tipo: 3 Sent: 2

Km: 145.28 Tipo: 1 Sent: 1

20 CARR: Puerto México - La Carbonera (Cuota)

CLAVE: 00115

ruta: MEX-057D



Km: 224.94 Tipo: 1 Sent: 1

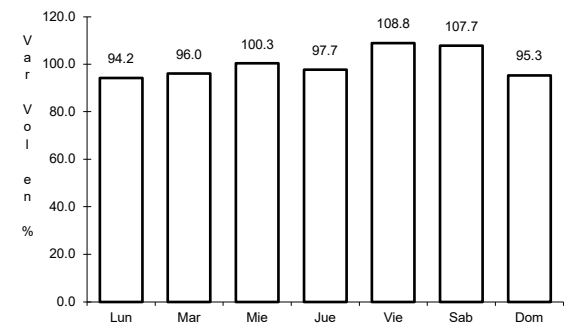
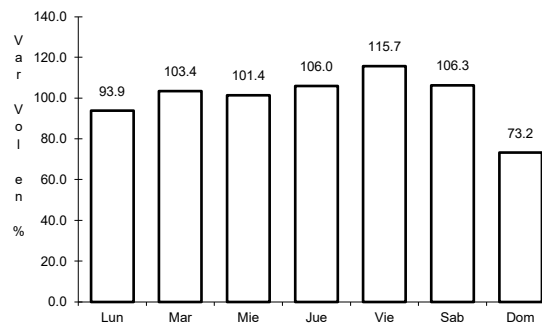
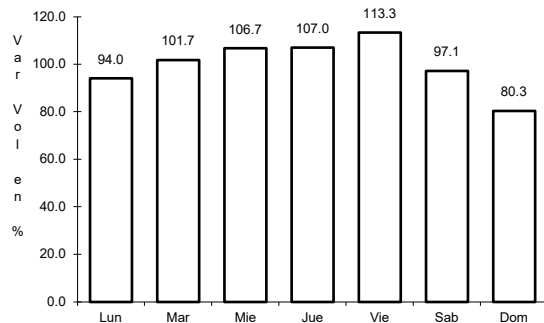
Km: 224.94 Tipo: 1 Sent: 2

Km: 228.30 Tipo: 3 Sent: 1

21 CARR: Saltillo - Monterrey (Cuota)

CLAVE: 00087

ruta: MEX-040D



Km: 46.21 Tipo: 3 Sent: 1

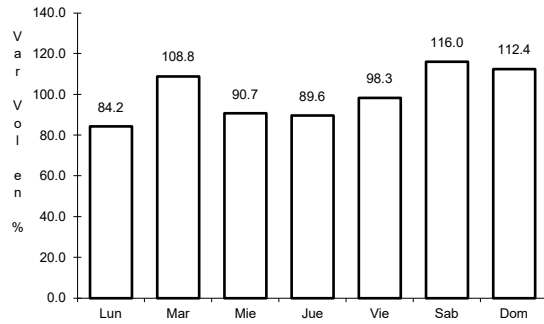
Km: 46.21 Tipo: 3 Sent: 2

Km: 82.00 Tipo: 3 Sent: 1

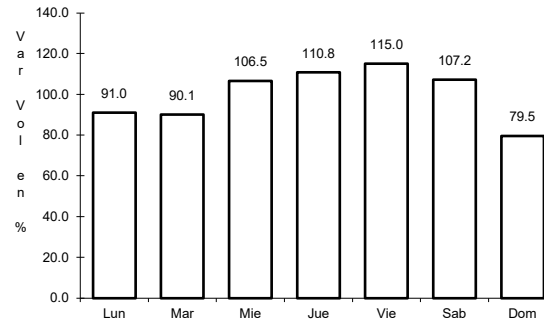
22 CARR: Agualeguas - El Ébano

CLAVE: 19004

ruta: NL-023



Km: 0.00 Tipo: 3 Sent: 0

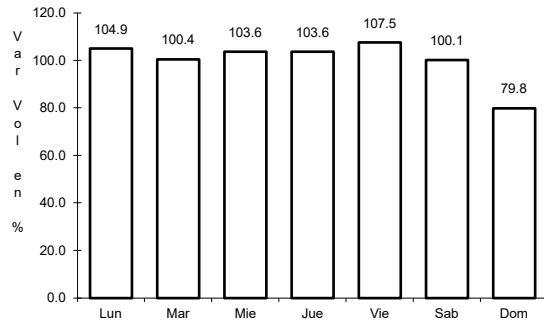


Km: 54.00 Tipo: 1 Sent: 0

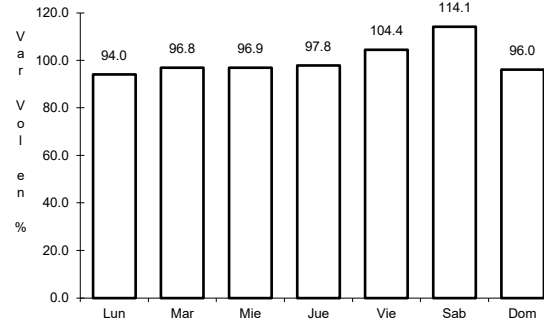
23 CARR: Apodaca - Villa Juárez

CLAVE: 00087

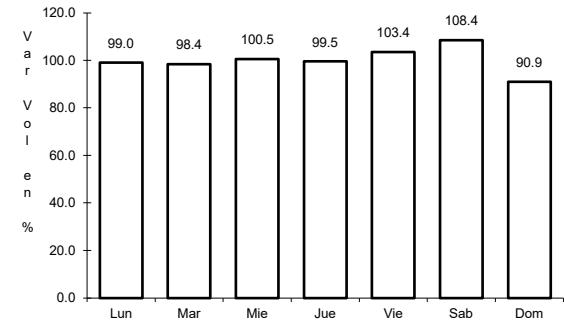
ruta: NL



Km: 0.00 Tipo: 3 Sent: 0



Km: 16.00 Tipo: 1 Sent: 1

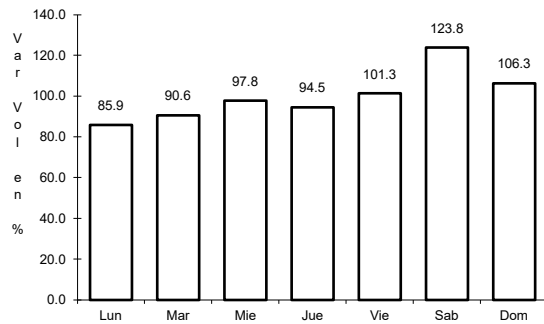


Km: 16.00 Tipo: 1 Sent: 2

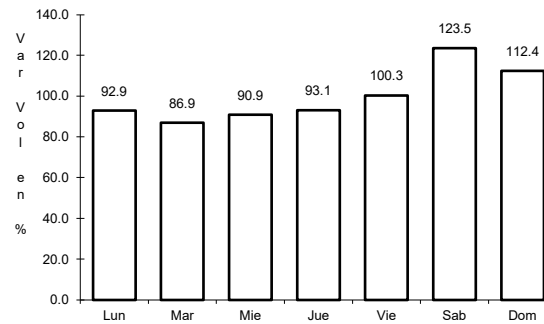
24 CARR: Atongo - Lazarillos

CLAVE:

ruta: NL



Km: 0.00 Tipo: 3 Sent: 0

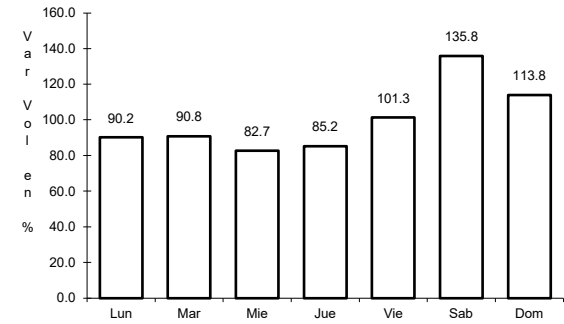
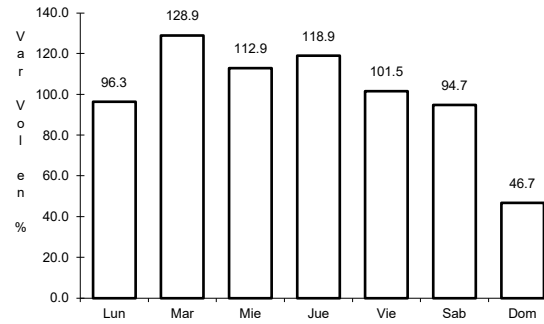
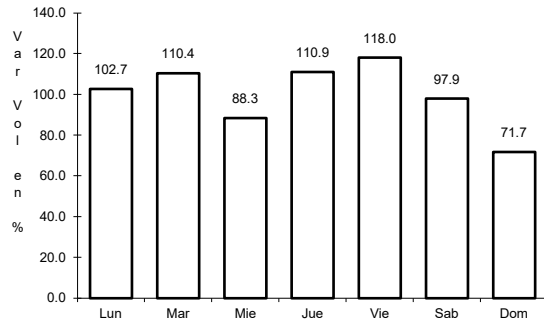


Km: 7.78 Tipo: 1 Sent: 0

25 CARR: Cadereyta de Jiménez - Doctor González

CLAVE: 19473

ruta: NL



Km: 0.00 Tipo: 3 Sent: 0

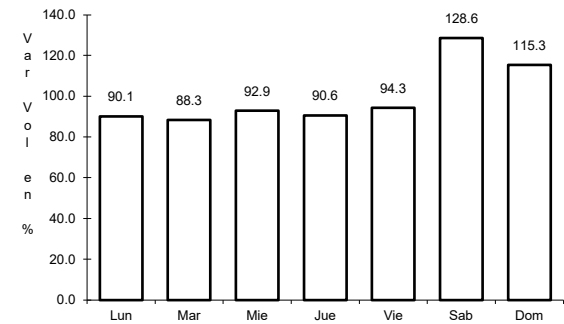
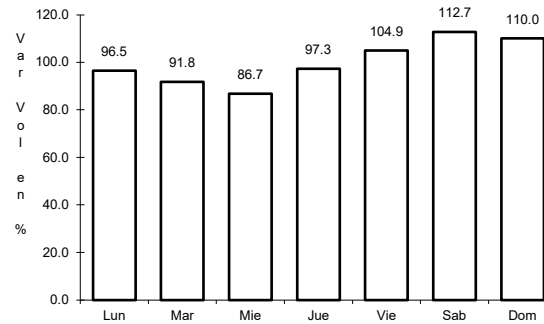
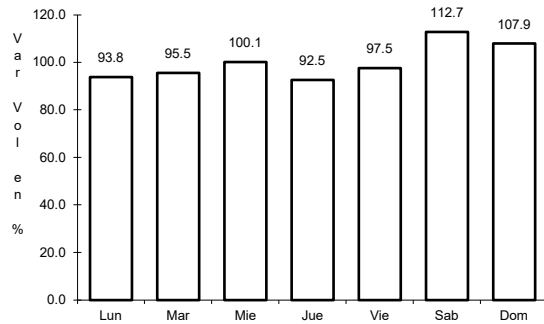
Km: 18.00 Tipo: 3 Sent: 0

Km: 30.00 Tipo: 1 Sent: 0

26 CARR: Cd. Benito Juárez - Villa de Santiago

CLAVE: 00087

ruta: NL



Km: 0.00 Tipo: 3 Sent: 1

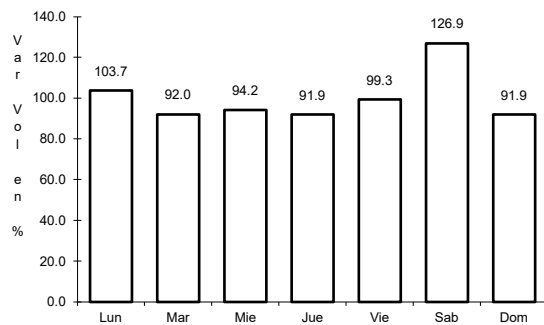
Km: 0.00 Tipo: 3 Sent: 2

Km: 39.00 Tipo: 1 Sent: 0

27 CARR: China - Méndez

CLAVE: 00191

ruta: NL-TAM

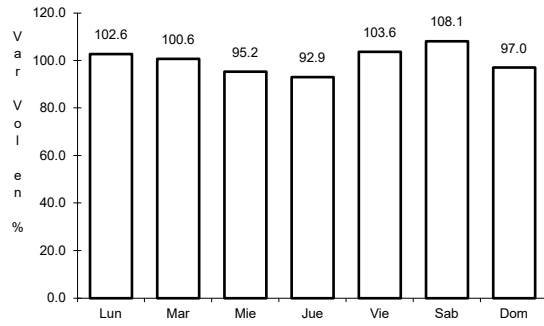


Km: 0.00 Tipo: 3 Sent: 0

28 CARR: Doctor Arroyo - Mier y Noriega

CLAVE: 19088

ruta: NL-088



Km: 0.00

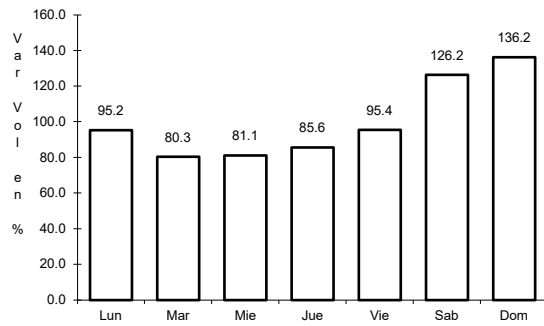
Tipo: 3

Sent: 0

29 CARR: Ent. Hacienda del Cielo - T. Der. Cadereyta

CLAVE:

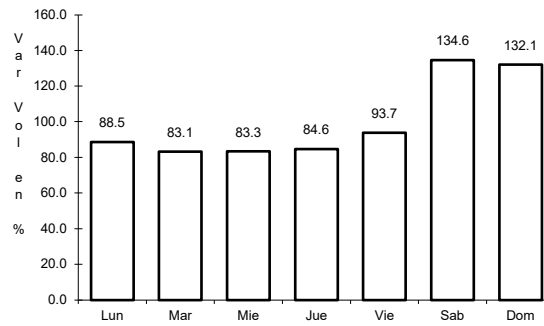
ruta: NL



Km: 0.00

Tipo: 3

Sent: 0



Km: 11.50

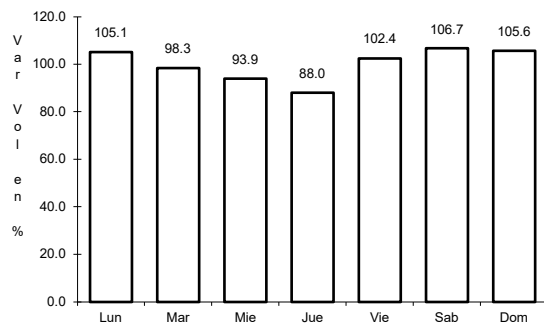
Tipo: 1

Sent: 0

30 CARR: Ent. Huisachito - Nuevo Laredo

CLAVE: 00074

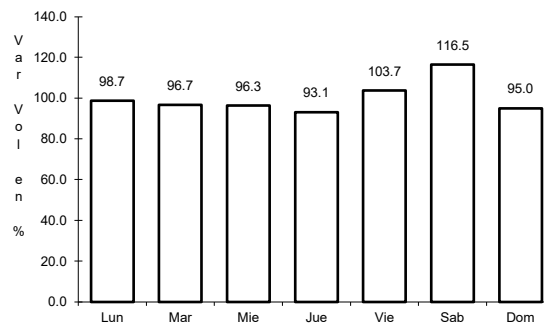
ruta: NL-001-TAM



Km: 0.00

Tipo: 3

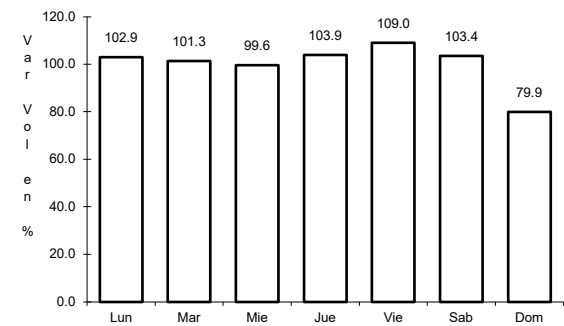
Sent: 0



Km: 47.00

Tipo: 1

Sent: 0



Km: 51.00

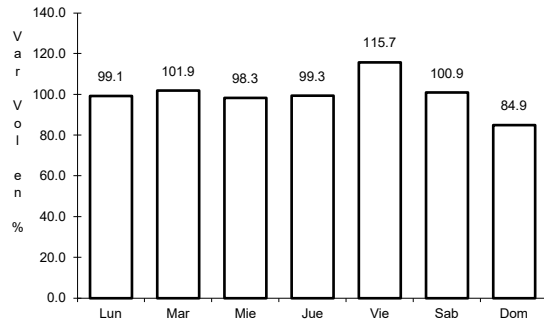
Tipo: 1

Sent: 0

31 CARR: Gral. Bravo - Los Aldamas

CLAVE: 19030

ruta: NL-030



Km: 0.00

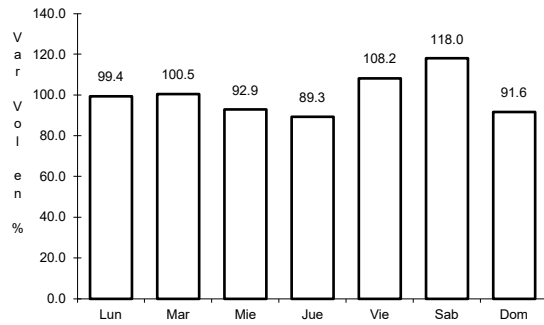
Tipo: 3

Sent: 0

32 CARR: Gral. Treviño - Villaldama

CLAVE: 19003

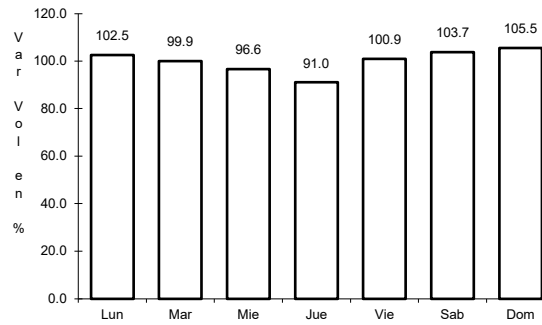
ruta: NL-003



Km: 0.00

Tipo: 3

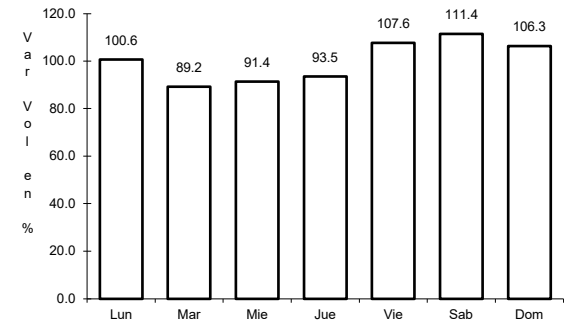
Sent: 0



Km: 62.00

Tipo: 1

Sent: 0



Km: 134.00

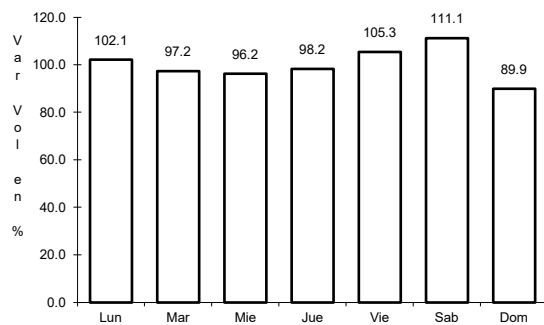
Tipo: 1

Sent: 0

33 CARR: Hacienda Guadalupe - Higuera

CLAVE: 19006

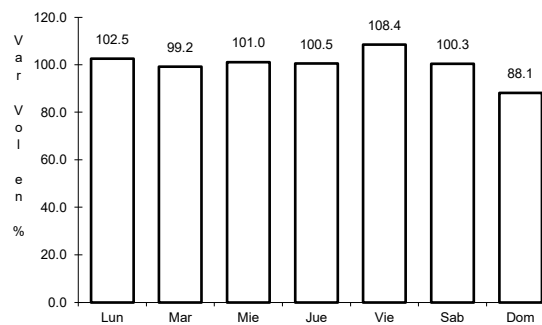
ruta: NL-006



Km: 3.00

Tipo: 1

Sent: 1



Km: 3.00

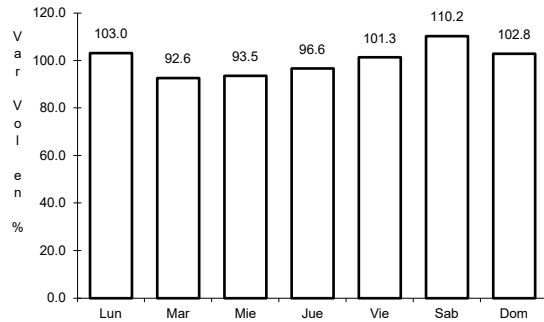
Tipo: 1

Sent: 2

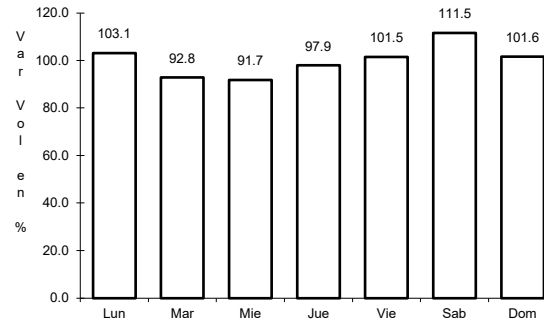
34 CARR: Libramiento de Linares

CLAVE: 19506

ruta: NL



Km: 0.00 Tipo: 3 Sent: 0

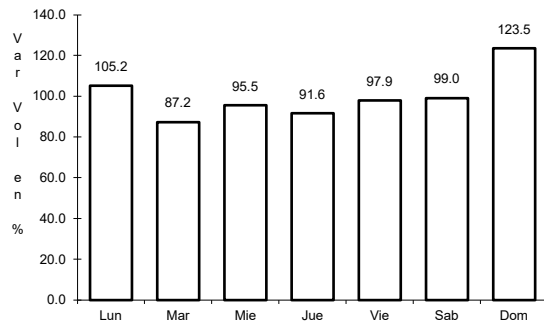


Km: 2.00 Tipo: 3 Sent: 0

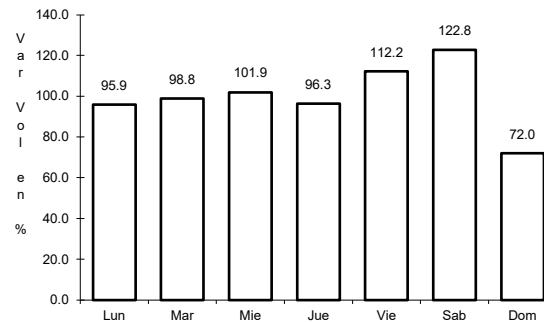
35 CARR: Libramiento de Montemorelos

CLAVE: 19492

ruta: NL



Km: 0.00 Tipo: 3 Sent: 1

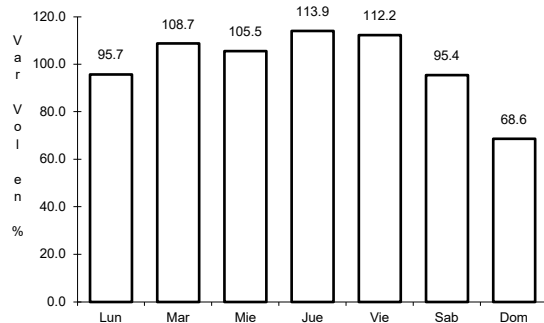


Km: 0.00 Tipo: 3 Sent: 2

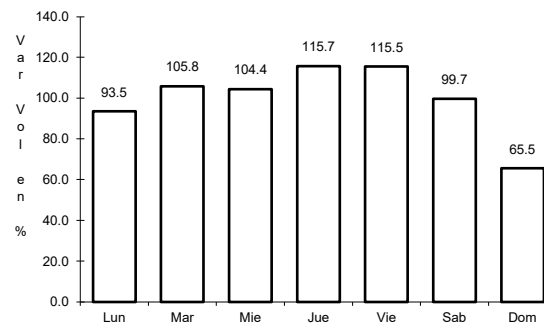
36 CARR: Libramiento de Sabinas Hidalgo

CLAVE: 19492

ruta: NL



Km: 0.00 Tipo: 3 Sent: 0

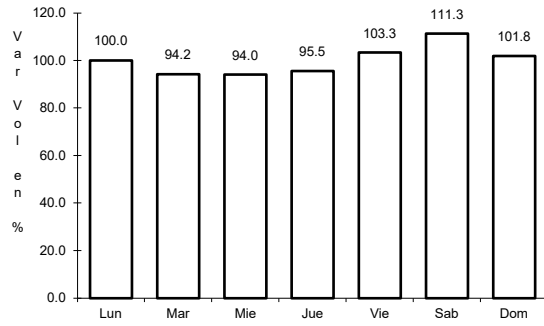


Km: 9.20 Tipo: 1 Sent: 0

37 CARR: Libramiento Poniente de Cadereyta

CLAVE: 19085

RUTA: NL



Km: 0.00

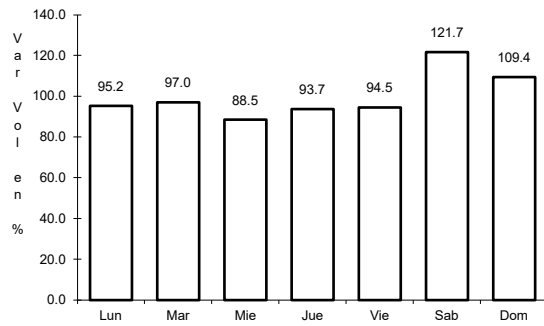
Tipo: 3

Sent: 0

38 CARR: Los Guerra - Los Herreras

CLAVE: 19031

RUTA: TAM-NL



Km: 73.00

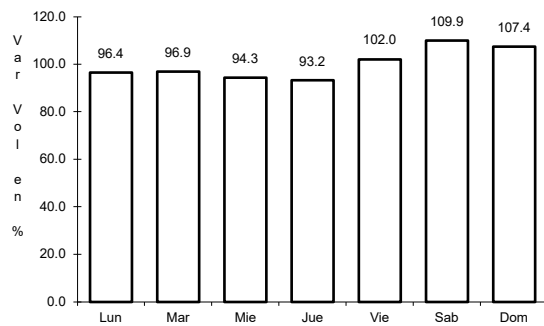
Tipo: 1

Sent: 0

39 CARR: Matchuala - La Poza

CLAVE: 00086

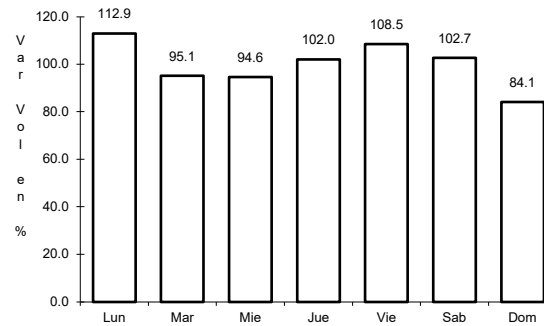
RUTA: SLP-029-NL-061



Km: 0.00

Tipo: 3

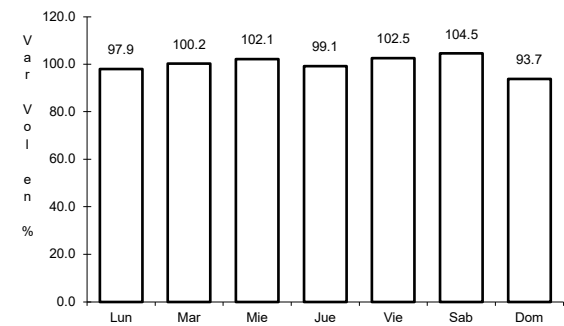
Sent: 0



Km: 49.00

Tipo: 1

Sent: 0



Km: 131.00

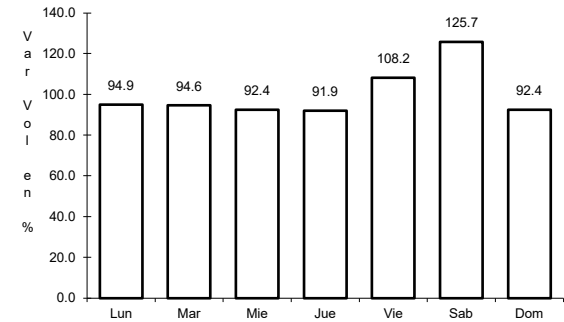
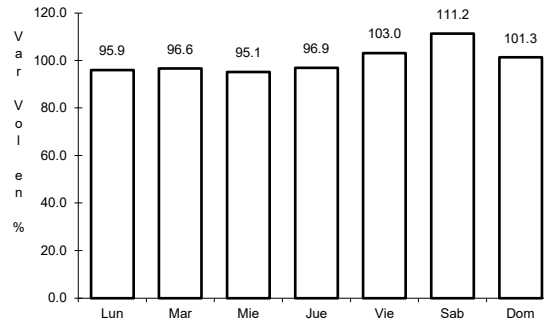
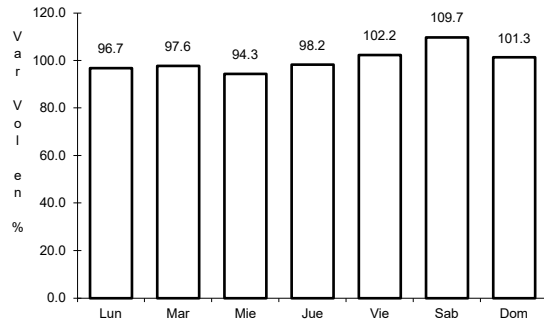
Tipo: 1

Sent: 0

40 CARR: Monclova - Estación Candela

CLAVE: 00501

ruta: COA-030-NL



Km: 5.10 Tipo: 1 Sent: 1

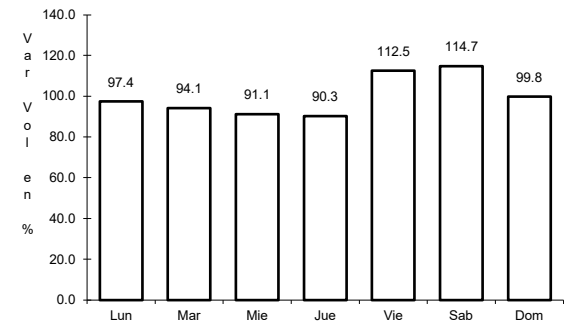
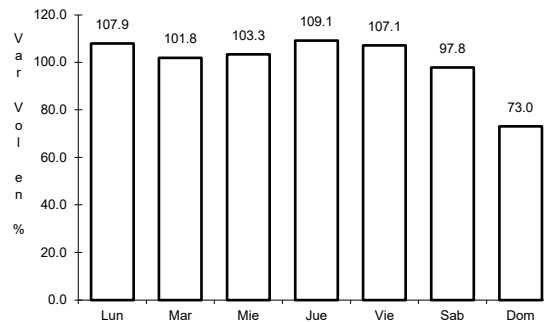
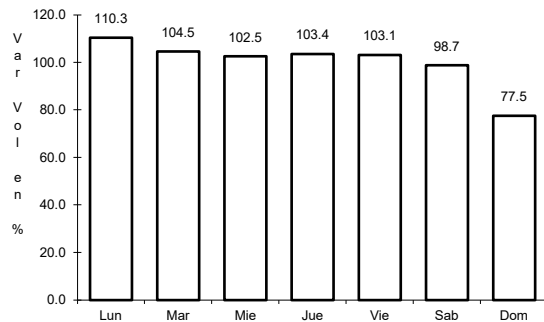
Km: 5.10 Tipo: 1 Sent: 2

Km: 125.50 Tipo: 1 Sent: 0

41 CARR: Monterrey - Colombia

CLAVE: 19001

ruta: NL-001



Km: 0.00 Tipo: 3 Sent: 1

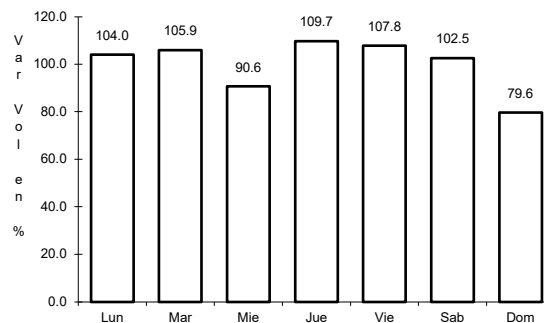
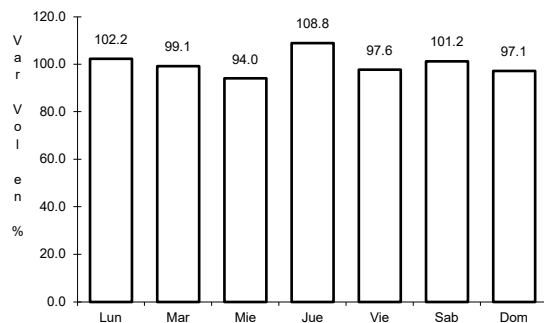
Km: 0.00 Tipo: 3 Sent: 2

Km: 124.04 Tipo: 1 Sent: 0

42 CARR: Palo Alto - Vallecillos

CLAVE: 19036

ruta: NL



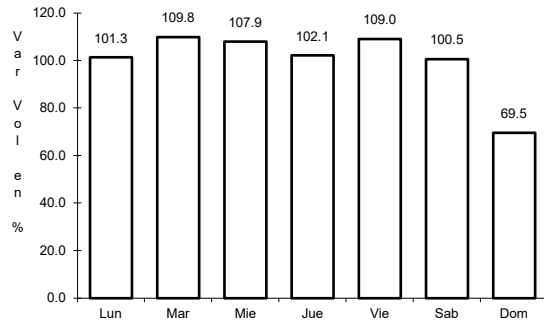
Km: 0.00 Tipo: 3 Sent: 0

Km: 43.00 Tipo: 1 Sent: 0

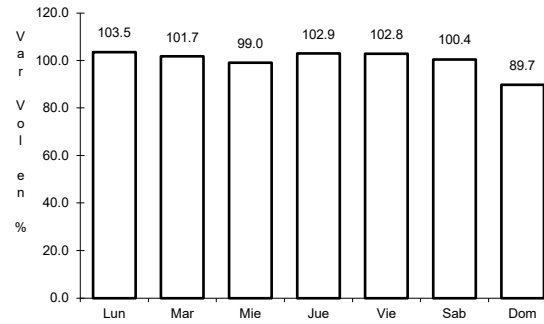
43 CARR: Peña Blanca - Cd. Camargo

CLAVE: 00102

ruta: NL-TAM



Km: 0.00 Tipo: 3 Sent: 0

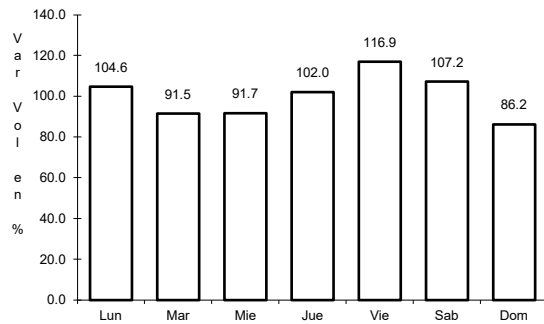


Km: 65.00 Tipo: 1 Sent: 0

44 CARR: Ramal a 18 de Marzo

CLAVE: 19475

ruta: NL

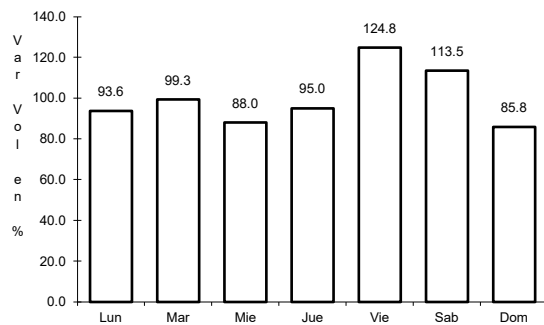


Km: 0.00 Tipo: 3 Sent: 0

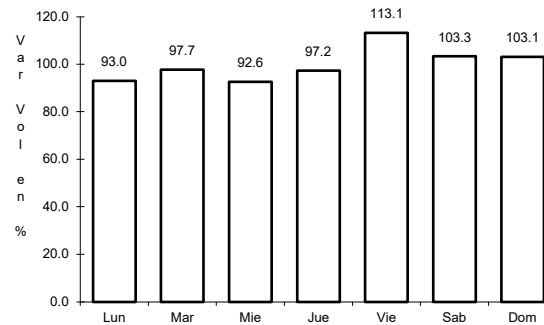
45 CARR: Ramal a Cerralvo

CLAVE: 19013

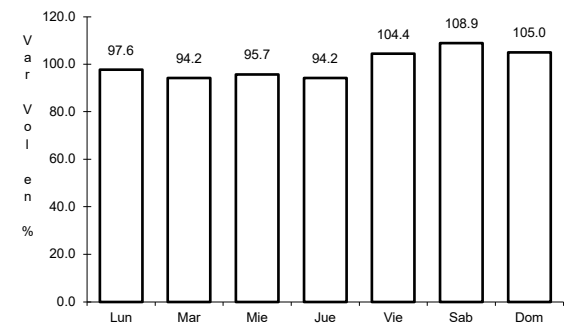
ruta: NL-013



Km: 0.00 Tipo: 3 Sent: 0



Km: 21.00 Tipo: 3 Sent: 0

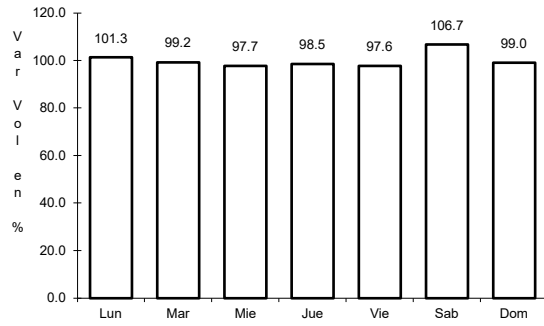


Km: 58.00 Tipo: 1 Sent: 0

46 CARR: Ramal a Marín

CLAVE: 19007

RUTA: NL



Km: 0.00

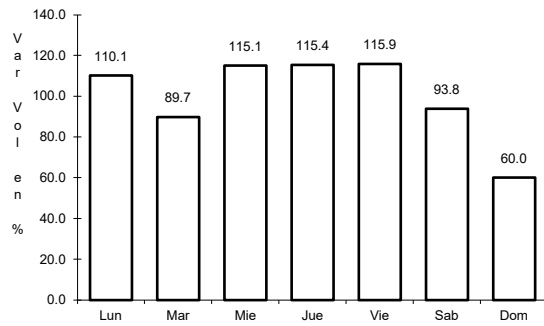
Tipo: 3

Sent: 0

47 CARR: Salinas Victoria - Ciénega de Flores

CLAVE: 19007

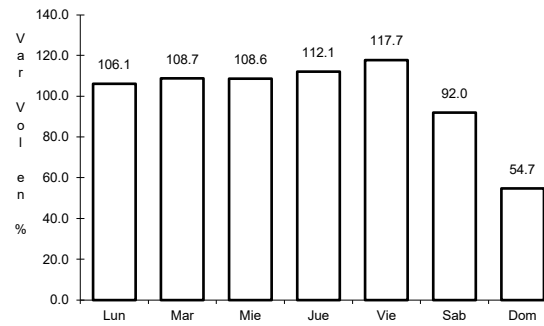
RUTA: NL



Km: 0.00

Tipo: 3

Sent: 0



Km: 6.00

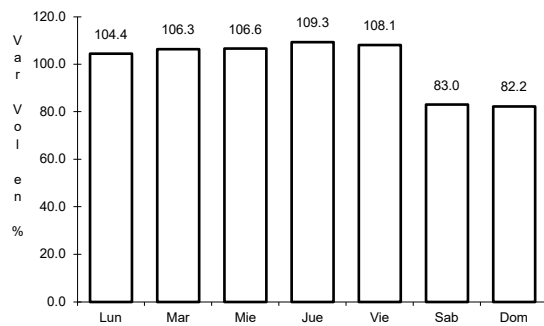
Tipo: 1

Sent: 0

48 CARR: Santa Rosa - Mezquital

CLAVE: 00087

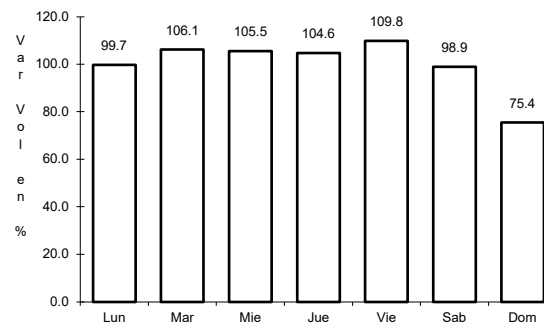
RUTA: NL



Km: 0.00

Tipo: 3

Sent: 1



Km: 0.00

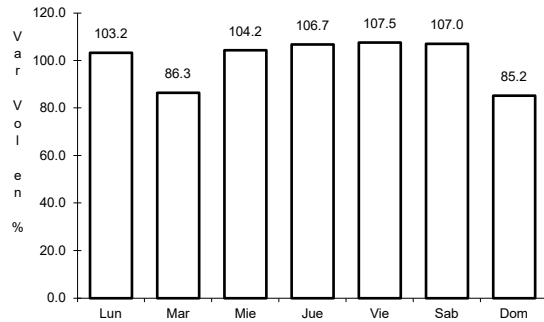
Tipo: 3

Sent: 2

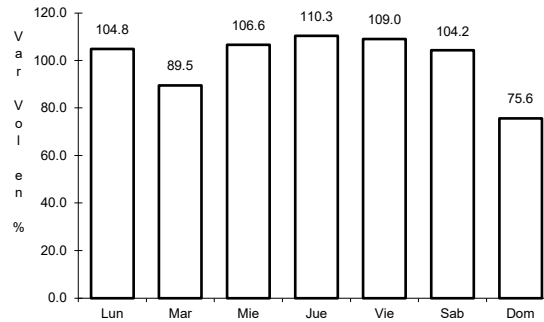
49 CARR: Santa Rosa - Salinas Victoria

CLAVE: 19037

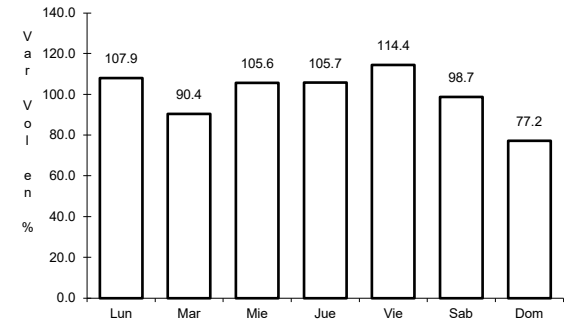
ruta: NL



Km: 0.00 Tipo: 3 Sent: 1



Km: 0.00 Tipo: 3 Sent: 2

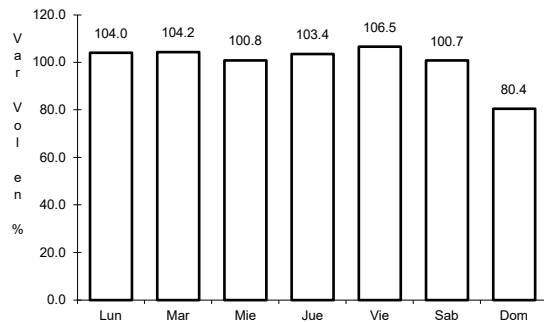


Km: 13.85 Tipo: 1 Sent: 1

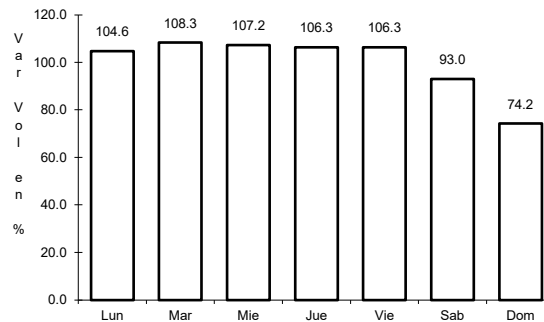
50 CARR: Aeropuerto de Monterrey (Cuota)

CLAVE:

ruta: NL-D



Km: 3.10 Tipo: 3 Sent: 1

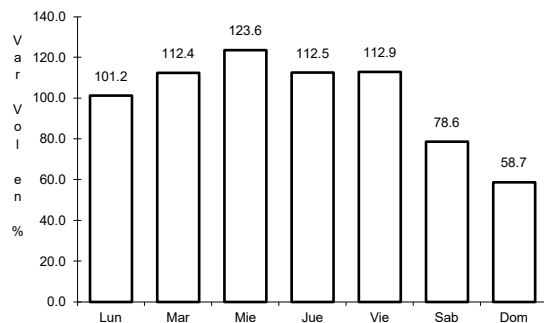


Km: 3.10 Tipo: 3 Sent: 2

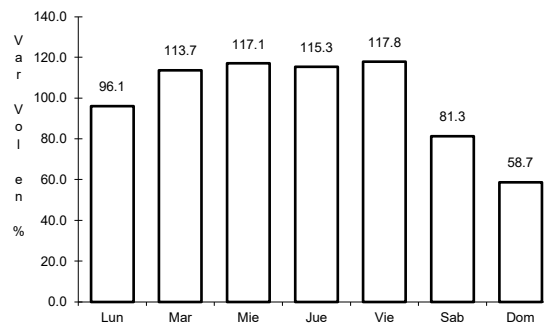
51 CARR: Anillo Periférico de Monterrey (Cuota)

CLAVE: 19004

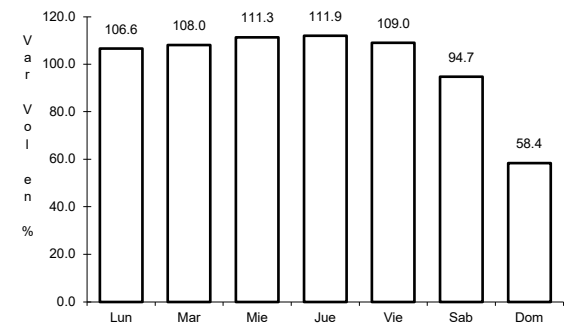
ruta: NL-D



Km: 0.00 Tipo: 3 Sent: 1

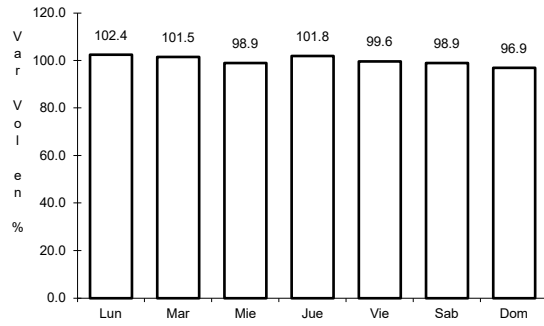


Km: 0.00 Tipo: 3 Sent: 2



Km: 49.30 Tipo: 1 Sent: 1

52 CARR: Monterrey - Cadereyta (Cuota)

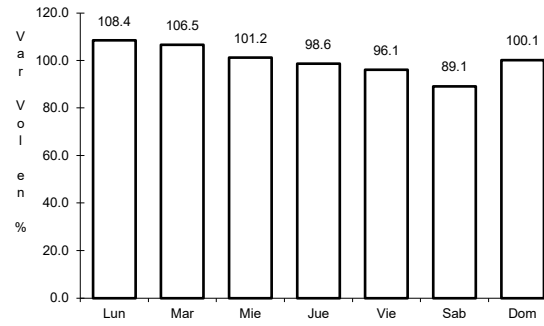


Km: 12.50

Tipo: 1

Sent: 1

CLAVE: 19281

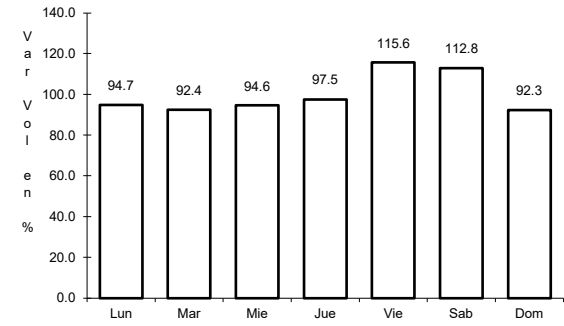


Km: 12.50

Tipo: 1

Sent: 2

RUTA: NL-D



Km: 21.80

Tipo: 3

Sent: 1